

What's new BO4.2 SP4 [Session A1]

Üetliberg, 12.09.2017
www.boak.ch



AGENDA

- Launchpad / WebIntelligence NG
- Lumira/Design Studio
- Information Design Tool
- Platform

LAUNCHPAD



LAUNCHPAD

- ihr-bo-server:8080/BOE/BILaunchpad
- Fiori-Style
- Modernes Interface
- Nur Reading-Mode

WEBINTELLIGENCE NG



WHATS NEW IN WEBINTELLIGENCE

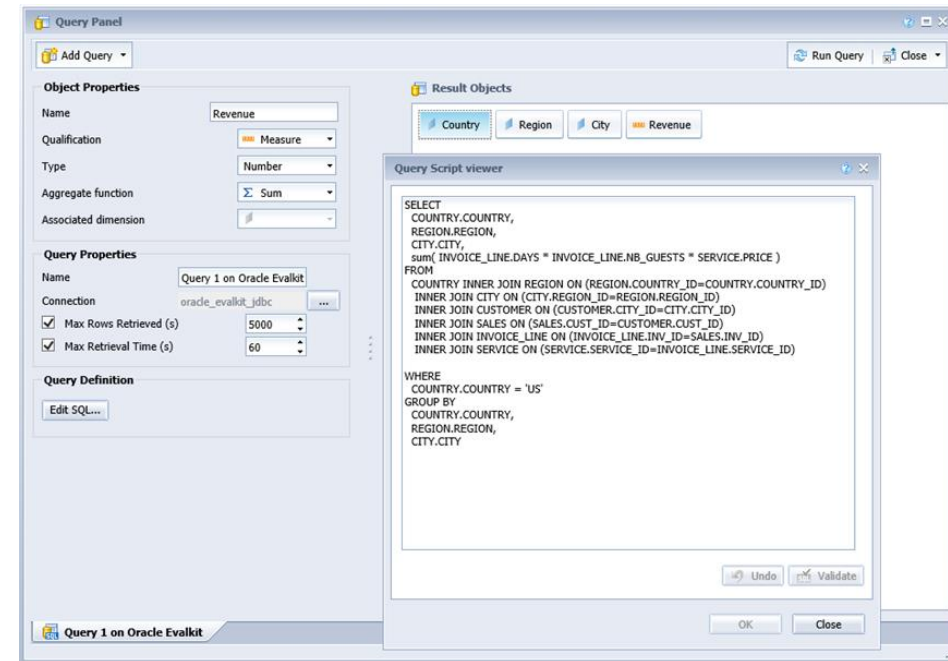
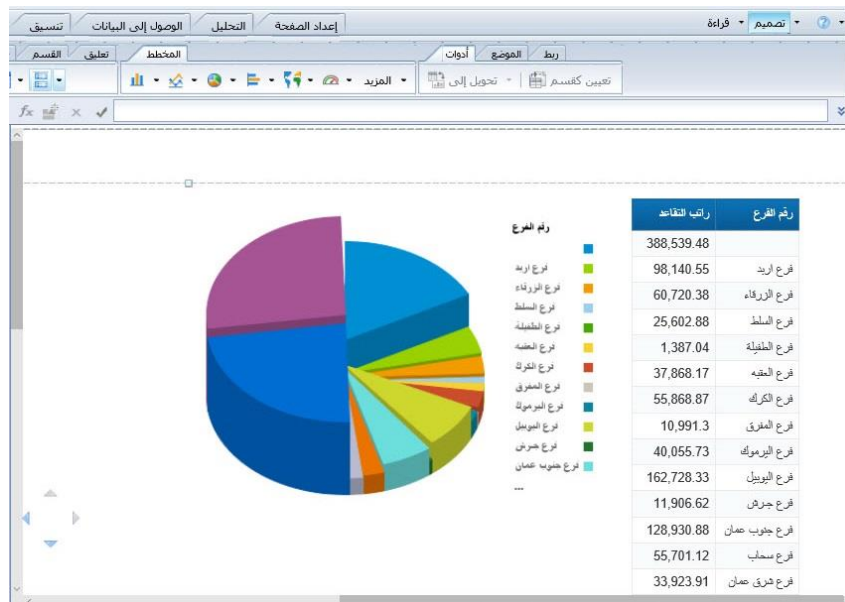
- New Web Intelligence Interactive Viewer
- Parity in Web Intelligence HTML and Web Intelligence Java Applet
- New Charts Type (Gauges, Tiles) and Charts Properties
- BI Variant: Exclude Prompts from BI Variant
- Cumulative Enhancements for Objects, Variables and Functions

SUPPORTED FEATURES INTERACTIVE VIEWER

- Navigation by report, section or page
- Refresh documents with the support of all types of parameters and BI variants
- Display comment
- Zoom
- Drill, if the document has been saved in drill mode
- Element linking
- New integrated Filters bar integrating:
 - Prompt summary
 - Input controls and group input controls
 - Element linking
 - Drill
- Sort and rank report elements dataset
- Collapse/elapse hierarchies
- Save as, export as PDF, export as Excel, send to

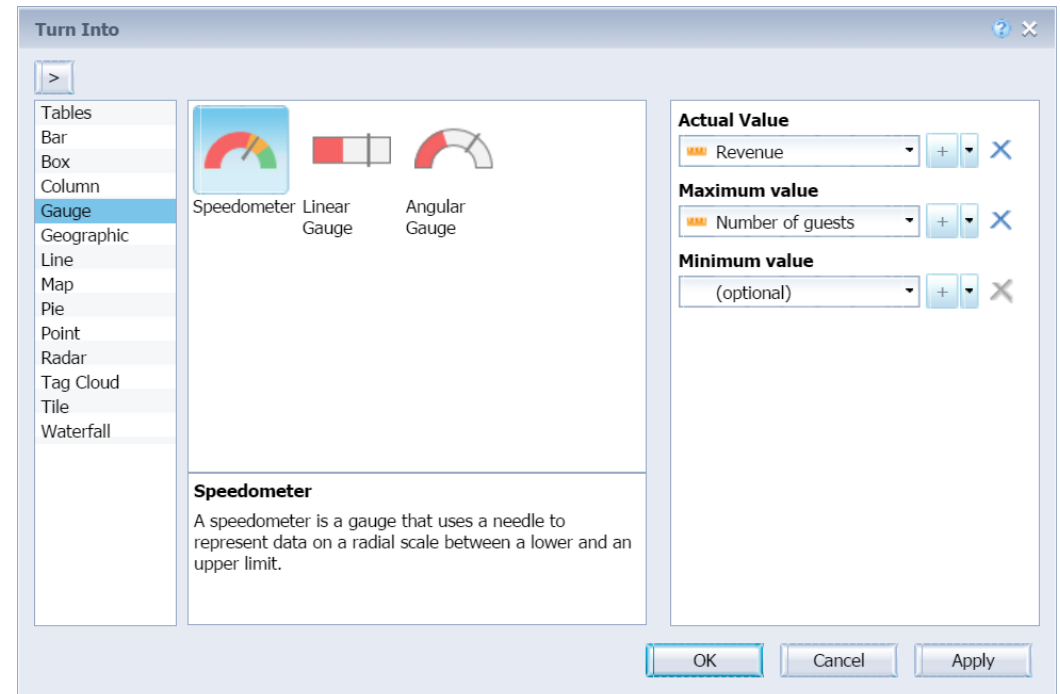
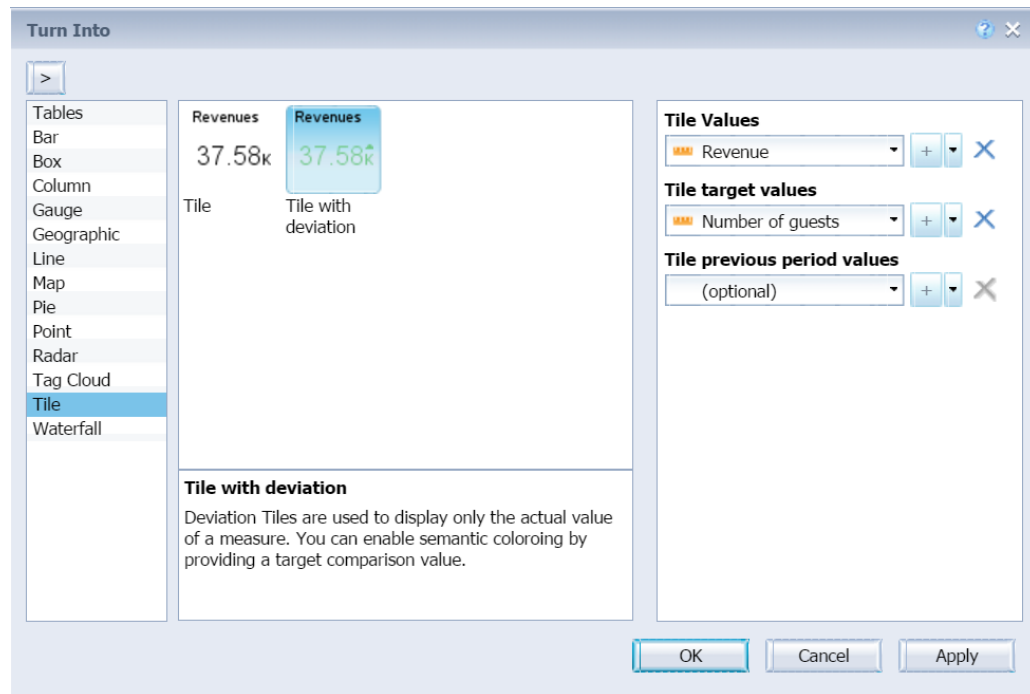
FEATURE PARITY DHTML/JAVA

- Freehand-SQL
- RTL-Support



CHARTS

- Gauges
- Tiles
- Chart improvements



BI PROMPT VARIANT

- Neu können Prompts abgewählt werden die nicht gespeichert werden sollen
- User-spezifisch
- Viewer-übergreifend

Create prompt variant

Name

Prompt Name	Answer values
<input checked="" type="checkbox"/> Enter value(s) for Lines	
<input checked="" type="checkbox"/> Enter value(s) for State	
<input type="checkbox"/> Enter value(s) for Year	

Select All Unselect All

OK Cancel

OBJECTS, VARIABLES AND REFERENCES

- Descriptions für Variablen
- Neue Funktionen:
 - DateBetween()
 - TimeBetween()
- Secured Objects zeigen neu #SECURITY
- References neu auch auf versteckte Feldern

The image shows two screenshots from the SAP Business Objects configuration interface. The left screenshot is the 'Edit Variable' dialog box. It has three sections: 'Definition', 'Qualification', and 'Formula'. In the 'Definition' section, the 'Name' field contains 'State2' and the 'Type' field contains 'Text'. The 'Description' field contains 'Cleansed state name'. In the 'Qualification' section, a dropdown menu shows 'Dimension'. In the 'Formula' section, the text '=Trim([State])' is entered. The right screenshot is the 'Available Objects' tree. It shows a hierarchy of objects: 'Charting Samples' (with sub-objects 'Lines', 'Quarter', 'State', 'Year'), 'Margin', 'Quantity sold', 'Sales revenue', 'Variables' (with sub-object 'State2'), and 'References'. A tooltip for 'State2' is displayed, showing its 'Type: Text', 'Description: Cleansed state name', and 'Formula: =Trim([State])'. A blue line connects the 'State2' variable in the 'Edit Variable' dialog to the 'State2' object in the 'Available Objects' tree.

WEBI CUSTOM ELEMENTS

- Chart-Extension
- Wird im Dokument eingebettet
- Nicht gleiche Funktionalität wie Standardchart
- Graphomate für Webintelligence

LIVEOFFICE MIT CUSTOM ELEMENTS

	AC	Delta BU	Delta PP
+ Texas	3.7m	+610.2k	+1.8m
+ New York	2.8m	+370.1k	+1.3m
+ Massachusetts	157.7k	-465.4k	-4.5k
+ Illinois	1.2m	+420.7k	+541.3k
+ Florida	660.4k	+82.3k	+314.4k
+ DC	1.2m	+456.6k	+583.5k
+ Colorado	768.3k	+203.3k	+384.3k
+ California	2.8m	+775.4k	+1.3m

LUMIRA+DESIGN STUDIO = LUMIRA 2.0



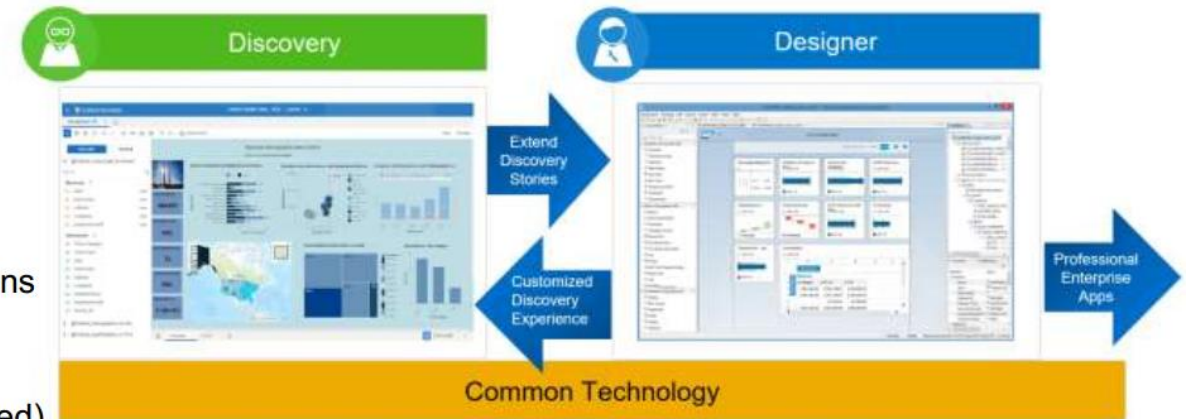
LUMIRA 2.0 VERSIONEN

Discovery

- Rich client for business users
- Connect to data sources, acquire, manipulate and merge data
- Work offline with data, explore and analyze data online
- Create stories with visualizations from all types of data

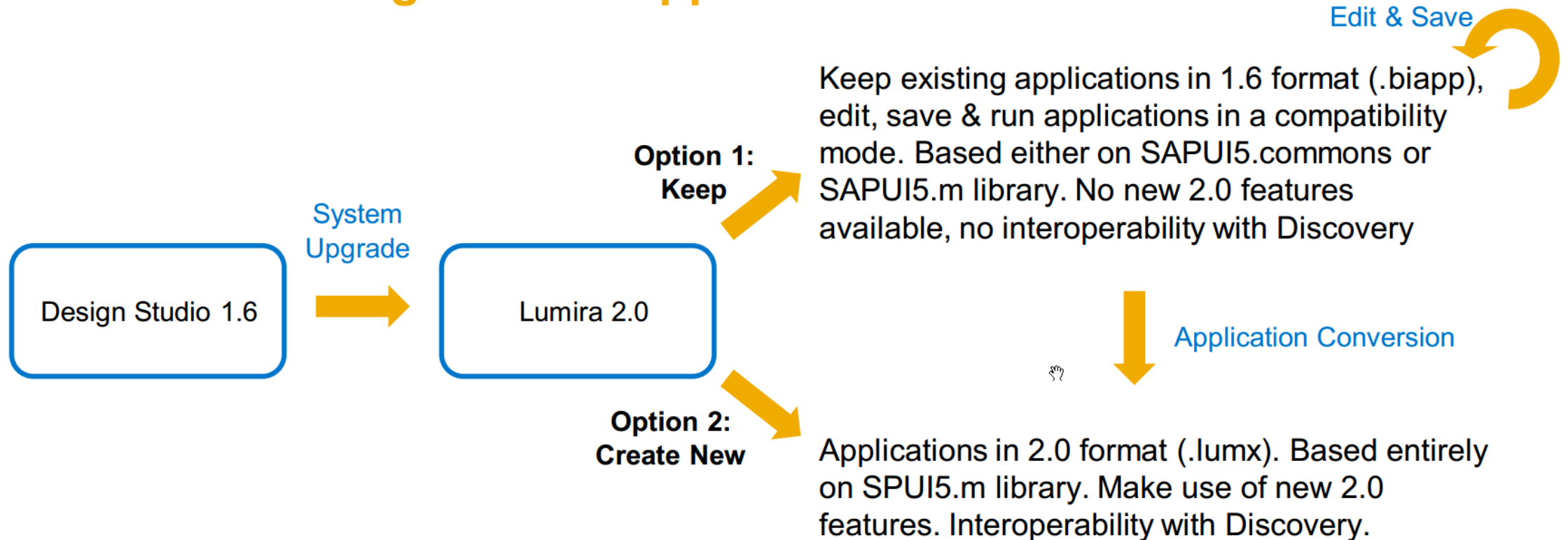
Designer

- Rich client for professional designers of corporate analysis applications
- Full control of the application look and feel, and user interaction
- Create shared UI elements (e.g. headers, footers, toolbars)
- Create planning applications (based on BW-IP or BPC 10.1 Embedded)
- Cost-effective management of large corporate BI deployments



DS CONVERSION

Design Studio Application Conversion Path



LUMIRA CONVERSION

Lumira 1.31
Patch 8

↓ Save for
conversion

Lumira 2.0



- Upgrade Lumira 1.31 Desktop to Patch 8
- Open the document to be converted
- Save the document with **Conversion** flag enabled

- Document will now be listed in Lumira Discovery
- Open the Document to convert to new format (plan for manual adaptation SAP Note [2509882](#))
- Save this converted document on Lumira Discovery and Publish to BI Platform

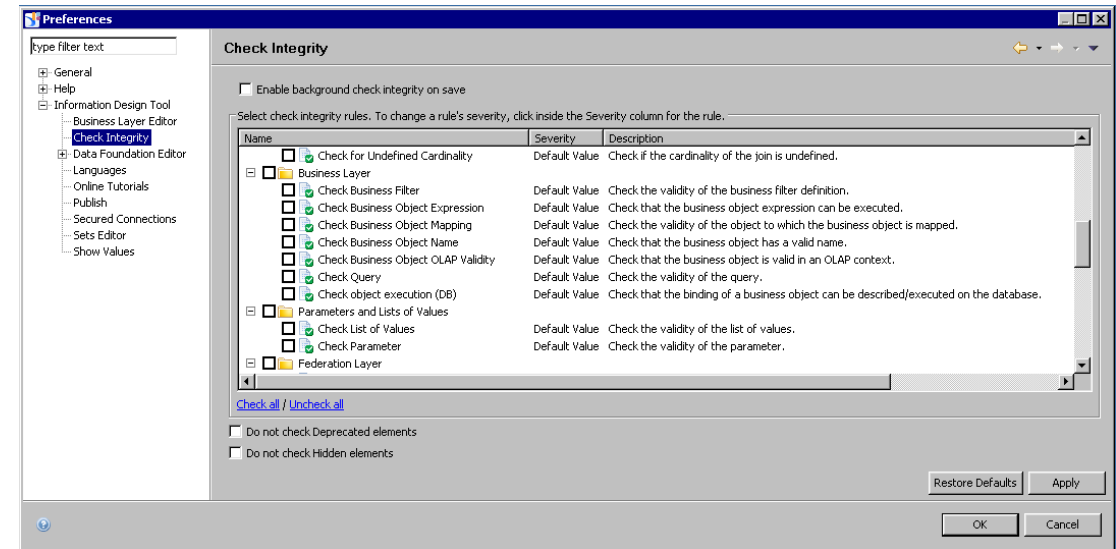
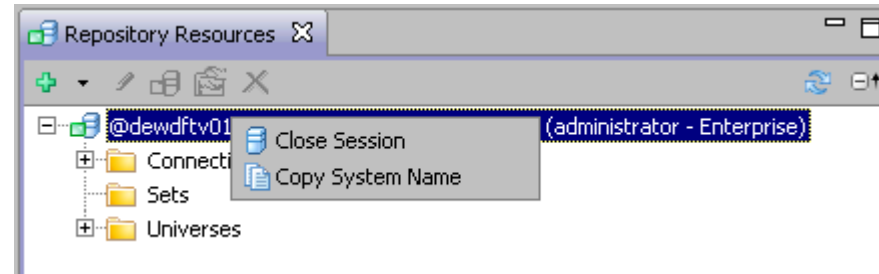
DEMO

INFORMATION DESIGN TOOL



WHATS NEW IDT

- (BI Sets)
- Copy System Name
- Check Integrity Einstellungen:
 - Beim publishen nicht mehr anzeigen
 - Do not check Deprecated elements
 - Do not check Hidden elements.



SUPPORTED DATA SOURCES

- SAP BI 4.2 SP4 supports new relational data sources for:
 - DB2 for i7.3
 - MySQL 5.7
 - Oracle Exadata 12
 - SQL Anywhere 17
 - SQL Server 2016
- For “big data” sources, SAP BI 4.2 SP4 also introduces support for:
 - SAP HANA SPS12
 - SAP HANA 2
 - SAP HANA VORA
 - Horton Works HDP 2.3.4
 - Apache Spark 2.0

PLATFORM



PLATFORM

- Search
 - Massiv bessere Performance (Scope of indexing area / Level of Indexing)
 - Weniger Diskverbrauch
- Verbesserungen BI on BI Universe
- Web Intelligence Change Source Utility
- Virus Scan integration
- Security Updates / 2FA

Wir freuen uns auf angeregte Gespräche mit Ihnen

- › Kristof Gramm
Senior Consultant, Knowledge Steward, Partner

 Follow us: @itlogixag

 <http://blog.it-logix.ch>