



# Join Us

 Tuesday

 Hotel UTO KULM, Zurich



# Coping With Complexity: Understanding the Challenges of a Multi-Vendor BI Environment

# Interactive Session!!

[www.menti.com](https://www.menti.com)

Code: 20 44 77



**Patrick Perrier**

Director of the Analytics Center  
of Excellence



Moved to EU in 1997

Crystal Decisions in 2001 then  
BOBJ...

Consultant and Trainer until 20  
when I joined 360Suite as CoE





## Our people

- 60 employees
- Very reactive support team (98% renewal rate)
- Support based in North America and Europe
- >50% in R&D



## Our customers

- More than 500 customers
- In more than 30 countries
- Small to big deployment (100-92,000 users)



## Our achievements

- 3,000,000 administered users
- Won EY entrepreneur of the year & other awards
- Continuously evolving company and tools



## Our offices







Upgrades  
& Migrations



Metadata  
& Impact Analysis



Quality  
Assurance



Life Cycle  
Management



Cost  
Reduction



Security  
& Compliance



Automations of  
Operations &  
Maintenance



Self-Service

# FORRESTER®

BI on BI: How to Manage the Performance of BI Initiatives

Use BI Fabric To Optimize Your Multivendor Business Intelligence Environment



## BI Survey

*'Tell us more about  
your BI reality'*





# Coping With Complexity:

Understanding the Challenges of a Multi-Vendor BI Environment

# How many BI Solutions do you have?

## FORRESTER®



Forrester says: 5 BI Solutions

- 1x Enterprise BI platform
- 1x Self-service BI Platform
- BI Embedded platforms

Our survey says (excluding BI Embedded):

- 2.32 BI Solutions by Participant
- 3.82 BI Solutions by Organization

Which of the following BI Solutions do  
you have at work?

“Multiple BI is here to stay”

- Your North American teams have deployed hundreds of BI applications based on **IBM Cognos**. Your European colleagues have been using **SAP BusinessObjects** for the last decade. Your recently acquired Asia Pacific business unit prefers **Microsoft BI**. On top of this, your finance and HR departments deployed **Qlik and Tableau**, respectively, last year. The marketing department chose **Domo** for its business application connectivity. And sales operations started deploying **Salesforce Einstein Analytics** to integrate with the Salesforce CRM platform./
- Uncertainty regarding the future of on-premise solutions (SAP BOBJ) or acquired companies (Looker, Tableau), Companies lifecycles (mergers and acquisitions).

**There is no one size fit all.**

Coping With Complexity:

# Understanding the Challenges of a Multi-Vendor BI Environment



# What are your pains with running several BI Solutions?

## How do you measure the overall performance of BI?

Main issues in our survey participants own words:

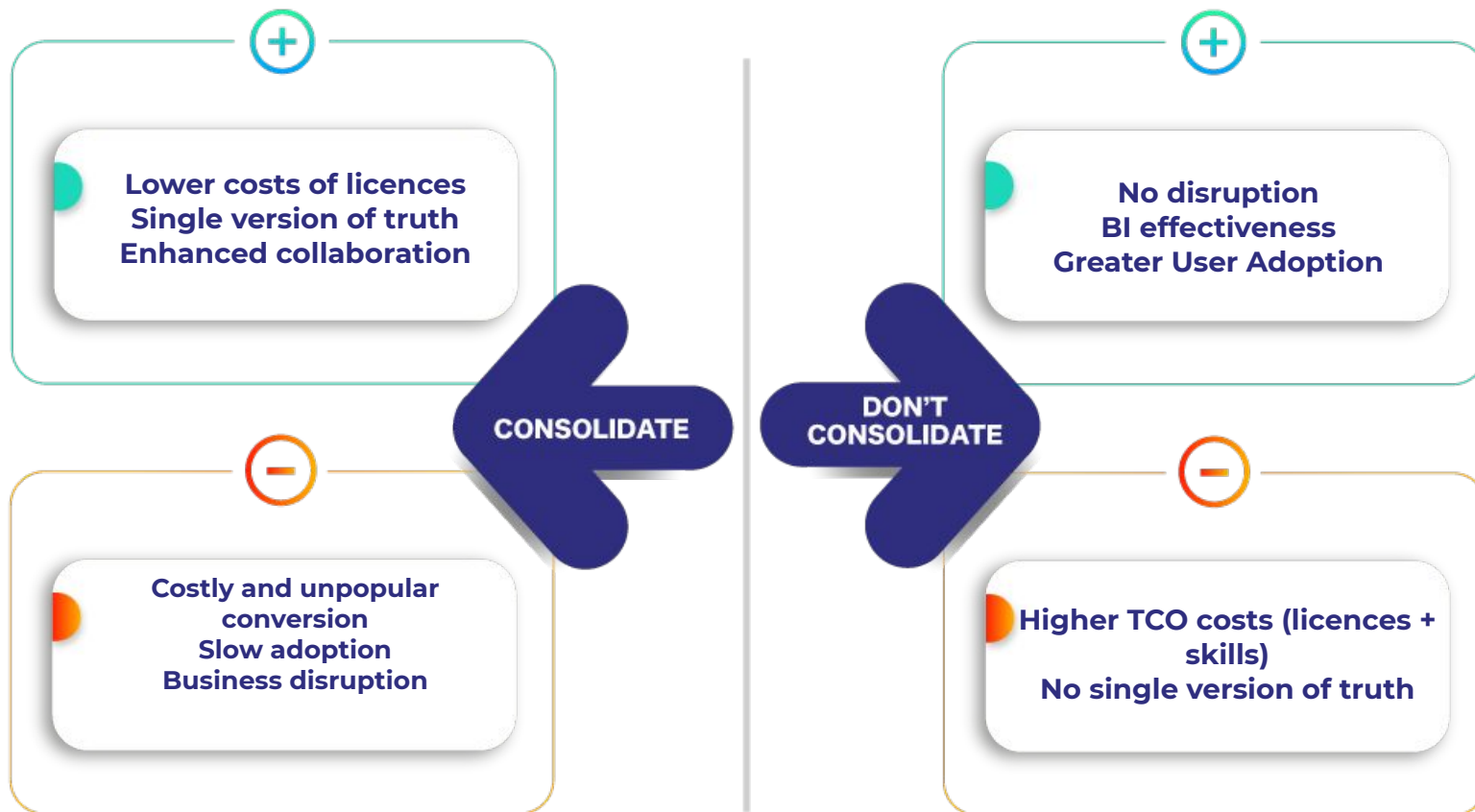
- Costs (Licenses, Infrastructure, IT Skills, End-user trainings, Cost tracking and Internal chargeback)
- No single version of truth (asynchronous data, data interpretation)
- Monitoring User Adoption (no cross-bi metrics)

**#1 Improve Efficiency of existing BI solutions**

**#2 Regression Testing (confidence in data?)**

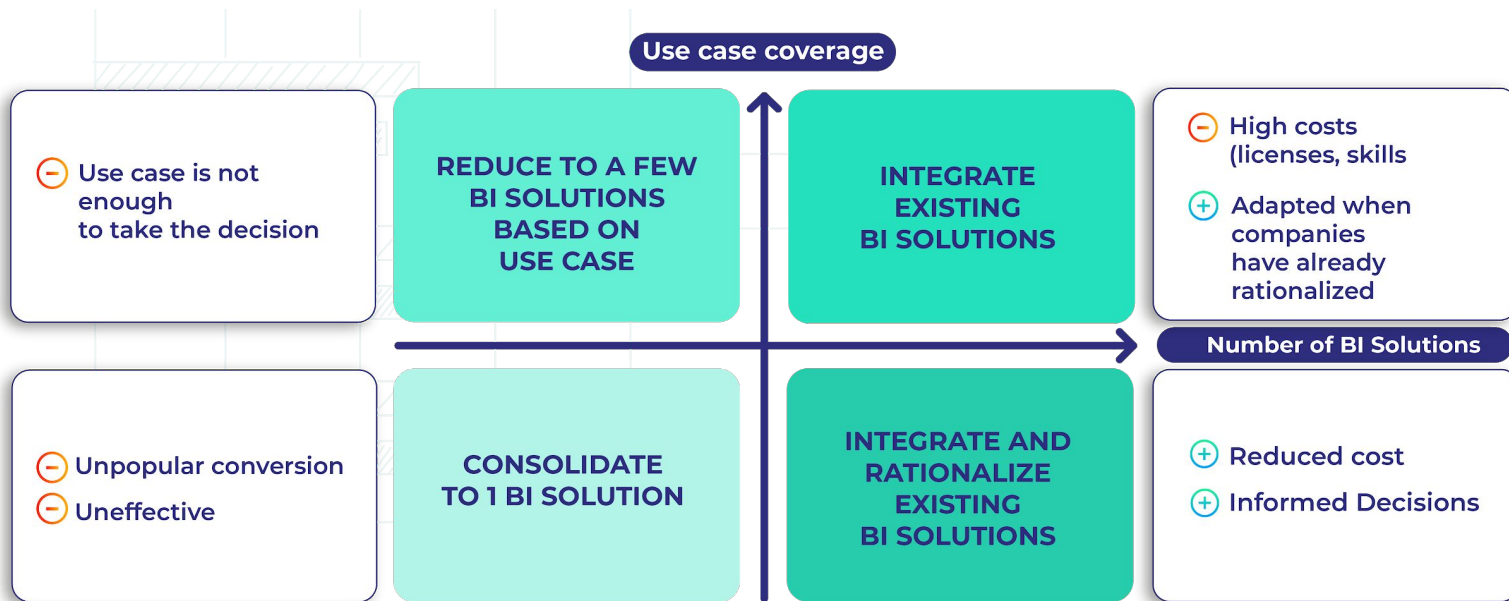
**#3 Control / Avoid Shadow IT**

# What strategy to adopt?



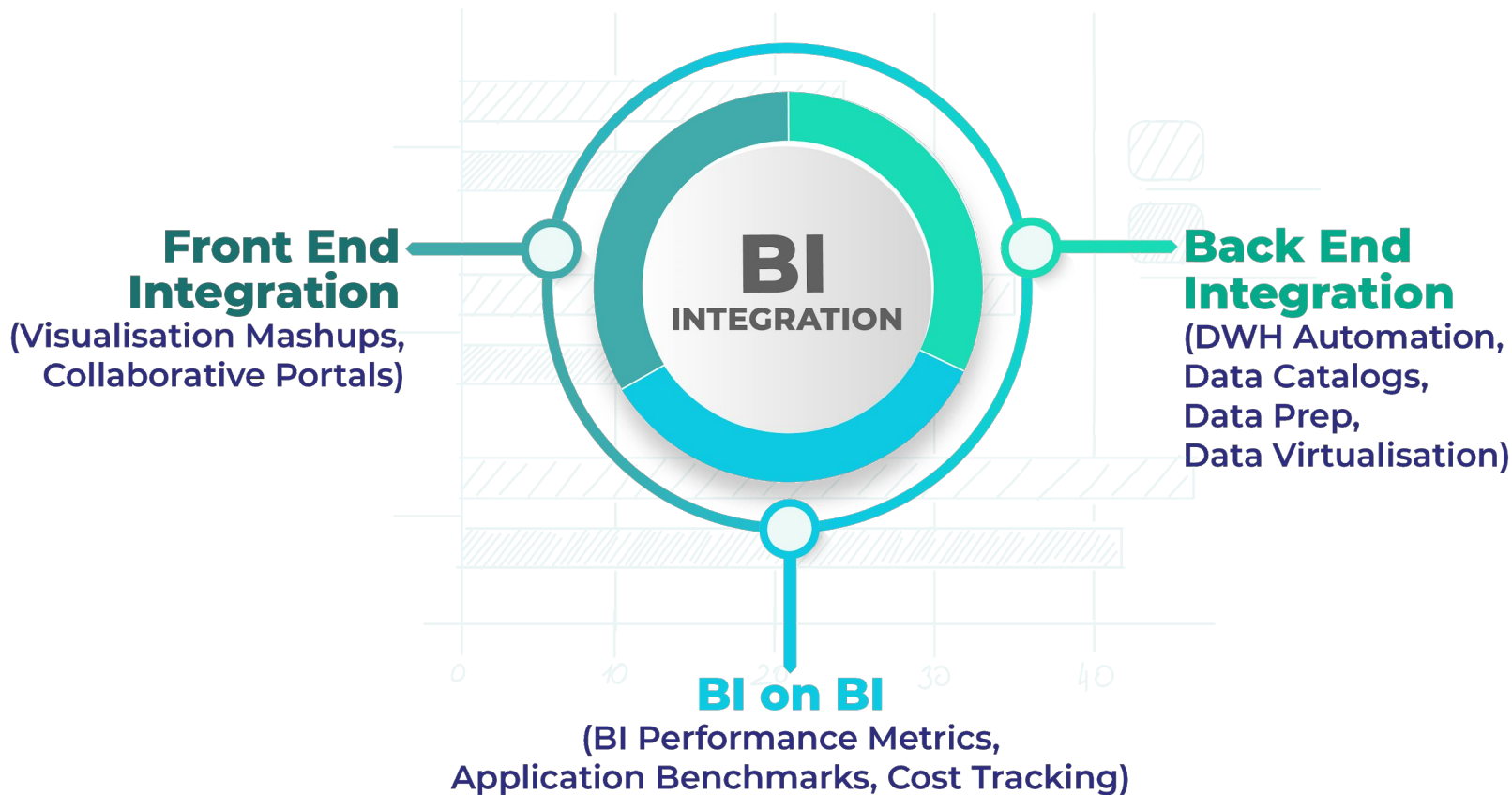
# Four Options To Deal With Multiple Enterprise BI Platforms

# What strategy to adopt?



Source: *Use BI Fabric To Optimize Your Multivendor Business Intelligence Environment*, Boris Evelson, Forrester

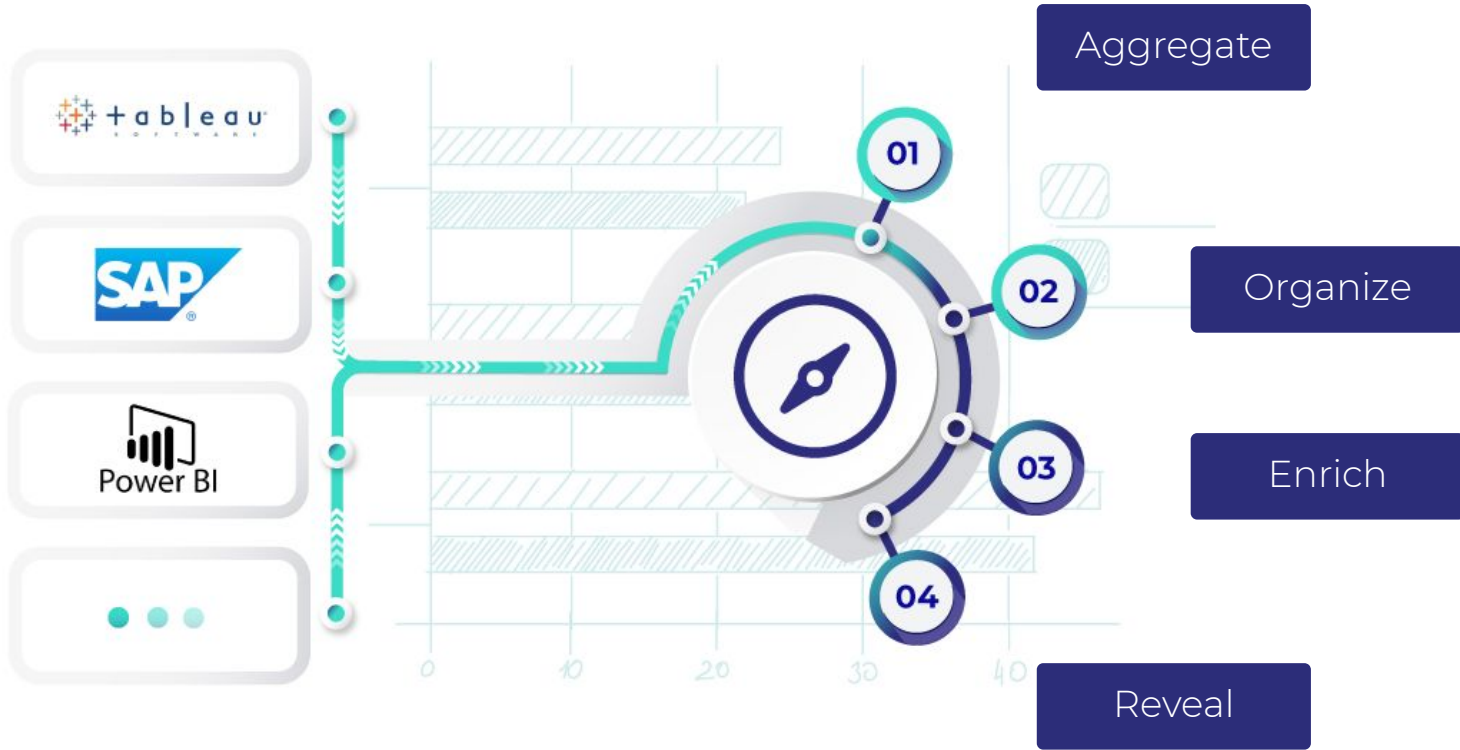
# Integrate & Consolidate Multiple BI Platforms





- Product roadmap/future product strategy related information captured in this document is highly confidential and proprietary to GB&SMITH company and its affiliates and may not be copied/distributed without written consent from GB&SMITH
- This roadmap document and contents/information discussed in this document are subject to change without any further notification by GB&SMITH
- This roadmap document doesn't constitute or guarantee to any product, service or any other license/legal agreement between GB&SMITH and prospects/customers
- All future product/solution direction statements and associated deliverables can differ from originally planned/communicated due to various risks and unexpected situations
- For all the latest information around products/solutions, we suggest you to contact with the GB&SMITH representatives

# 360Suite's future BI Integration Platform



# Consolidate Your BI Solutions

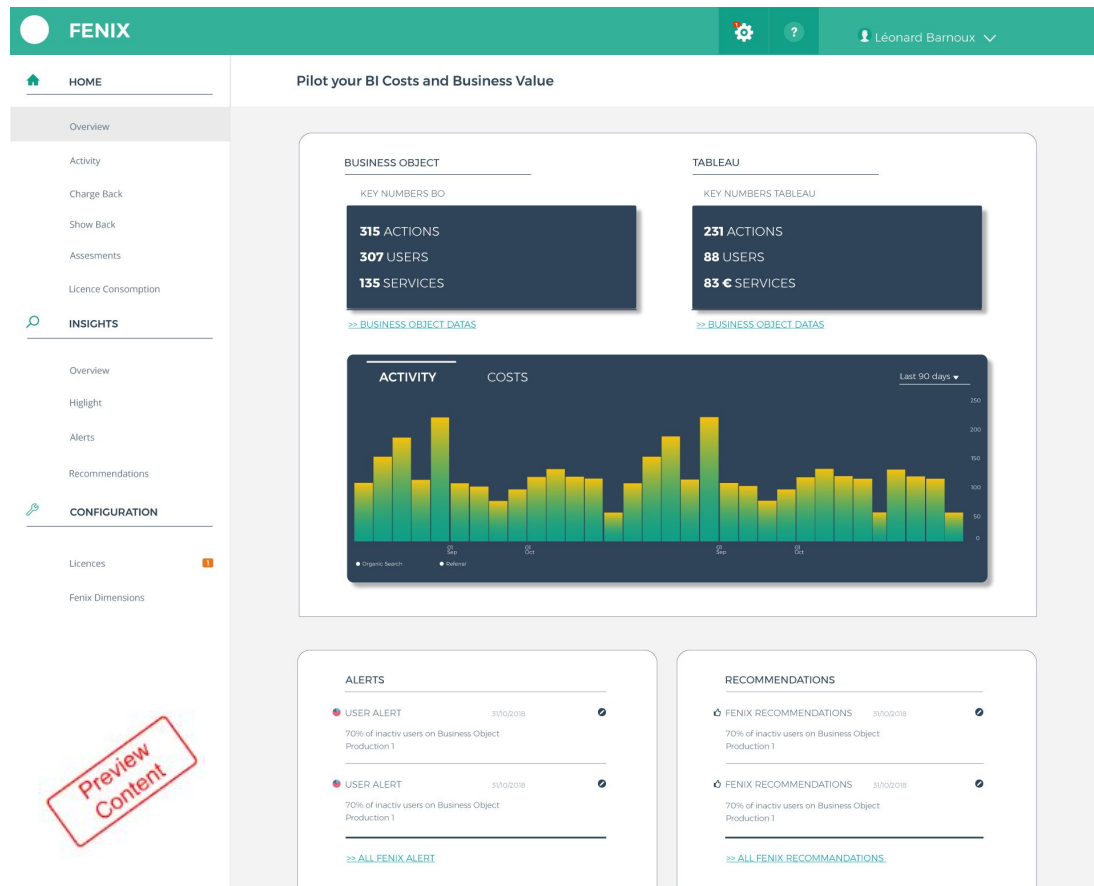
360Suite helps BI managers:

- Justify & predict BI investments
- Monitor user adoption
- Reduce costs
- Streamline the BI lifecycle
- Maintain security
- Ease migrations
- Satisfy GRC requirements
- and more

Across multiple BI platforms.



# 360Suite new platform mockup



Preview  
Content

# Quiz - Play to Win!

## Presentations Today:

- B1: Moving Made Simple: How to Upgrade/Migrate SAP BusinessObjects with Ease and Success
- B2: Work Smarter, Not Harder: How Automation and Orchestration Can Save Time and Money for SAP BusinessObjects Administrators
- B3: Coping With Complexity: Understanding the Challenges of a Multi-Vendor BI Environment







**Request a  
free trial**

Patrick Perrier



[patrick.perrier@360suite.io](mailto:patrick.perrier@360suite.io)



+44 (0) 7727 260 424



<https://www.linkedin.com/in/pperrier/>



[www.youtube.com/360suite](http://www.youtube.com/360suite)



[www.360suite.io](http://www.360suite.io)