



C3 & C4: Hands-on SAP Data Intelligence Platform

Michael Probst & Thomas Bitterle
Solution Advisors, SAP Switzerland

PUBLIC

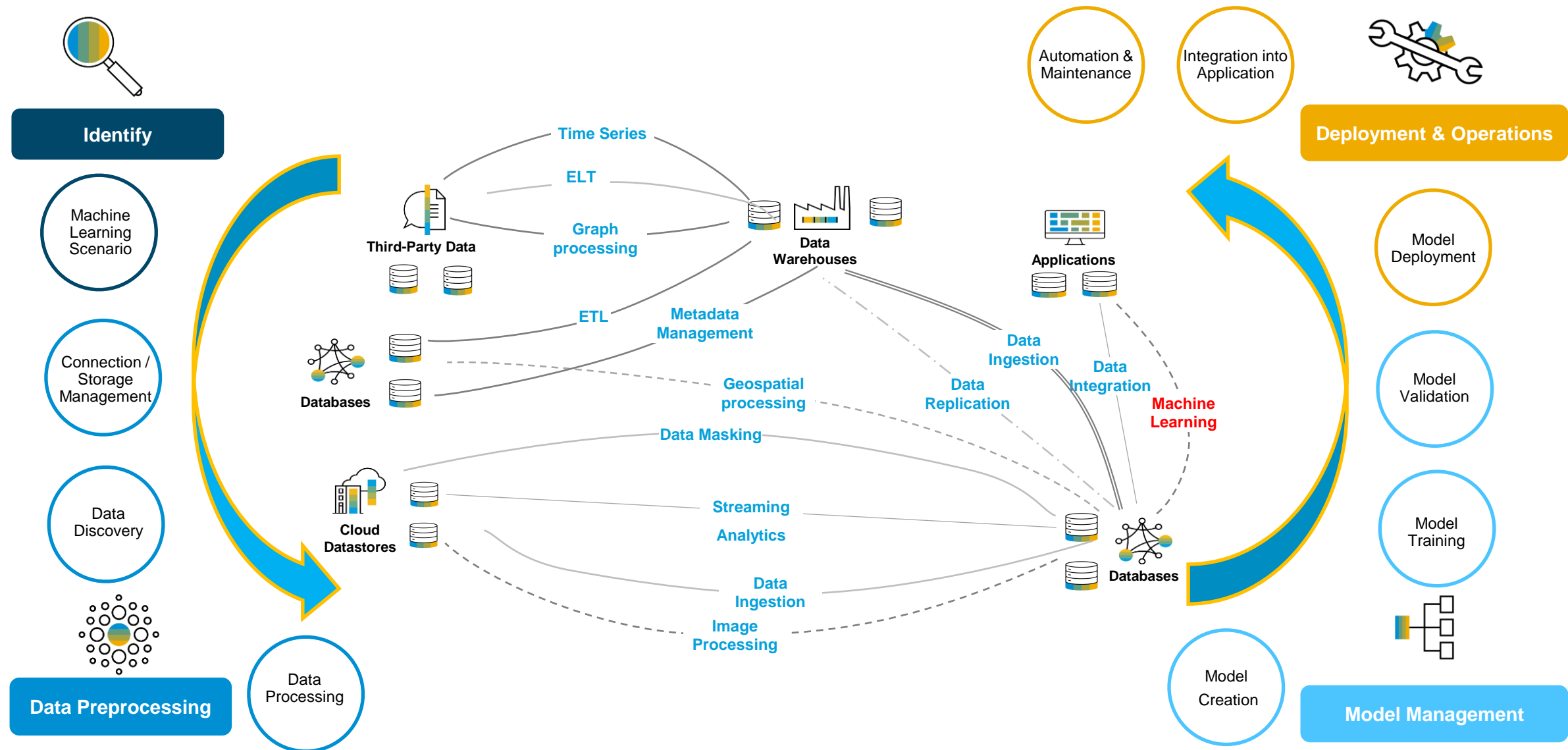
Agenda – Übersicht SAP Data Intelligence und Hands-On

- Introduction
- Overview Recap
- Hands-On Exercises
- Next Steps



Gaining intelligence is a difficult challenge in today's landscapes

Gaining intelligence is an isolated operation as well although it should be a continuous process



Building Data Driven Applications with Intelligence

On-premise & public cloud

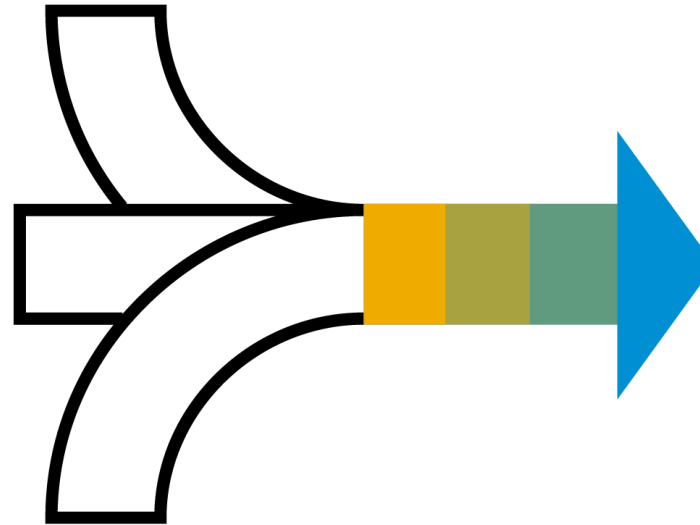
- Discover, refine, govern, orchestrate any type, variety, and volume of data across your distributed data landscape
- Focuses on complex data orchestration & pipelining

Cloud Service on SAP Cloud Platform

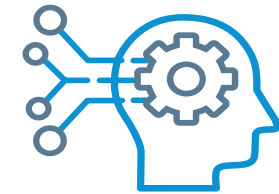
- Includes all SAP Data Hub functionality
- Additional capabilities by GA
 - Jupyter Notebook integration
 - Scenario manager to manage and deploy ML models
 - Operations cockpit – manage and monitor execution

Today

SAP Data Hub



SAP Data Intelligence



Intelligent Applications

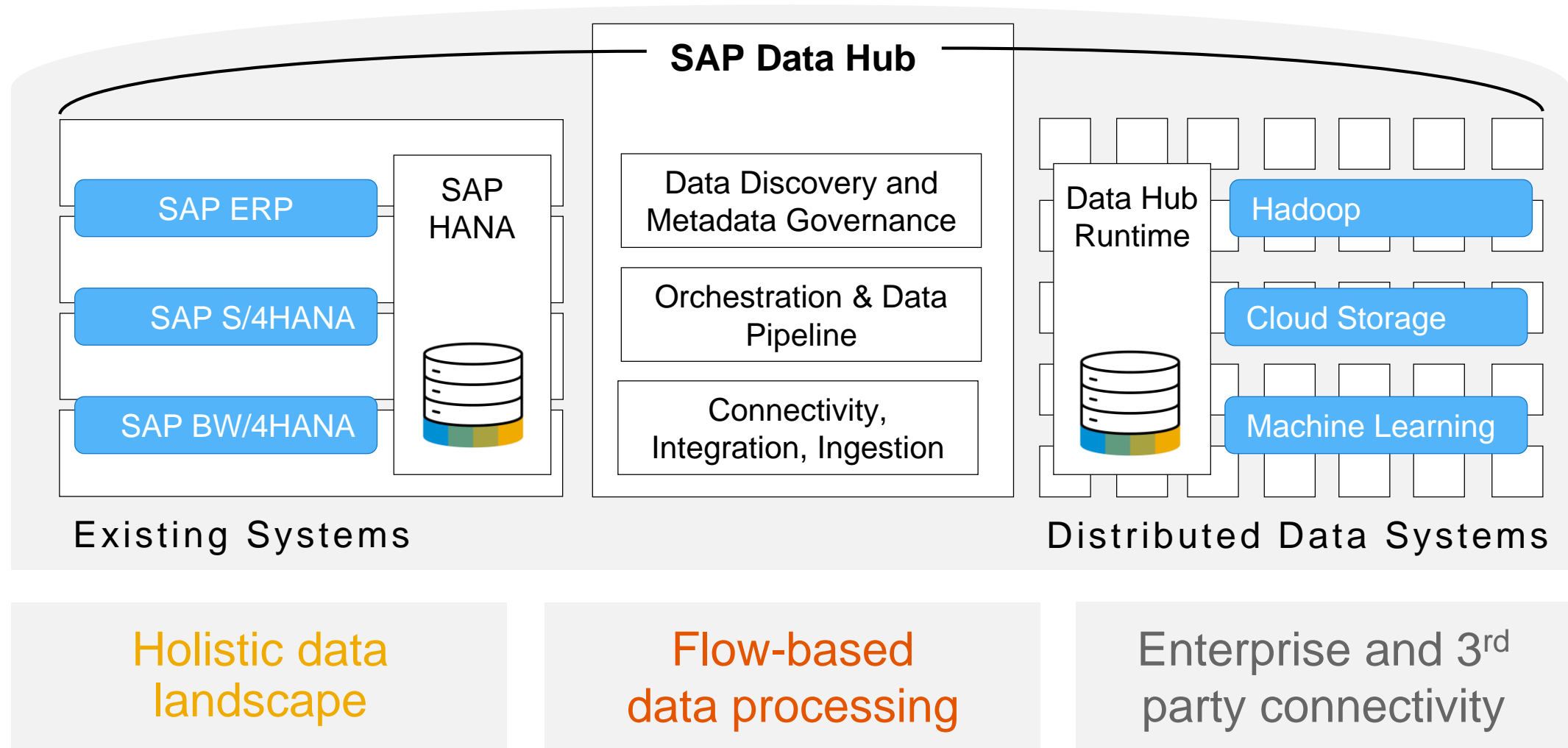
Feature Parity between SAP Data Hub OP & SAP Data Intelligence cloud

- Product update frequency
 - Cloud updates once a quarter
 - OP updates twice a year

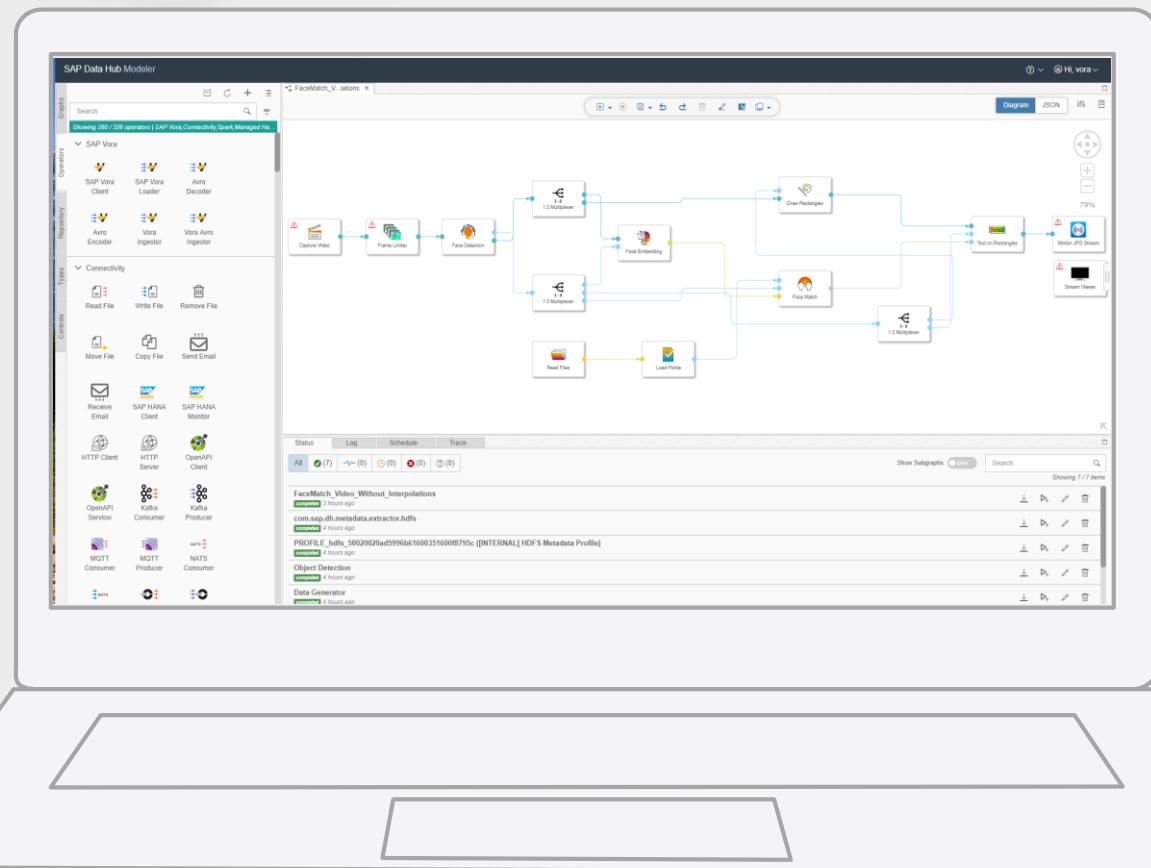
Tomorrow

Technical Overview

Building blocks



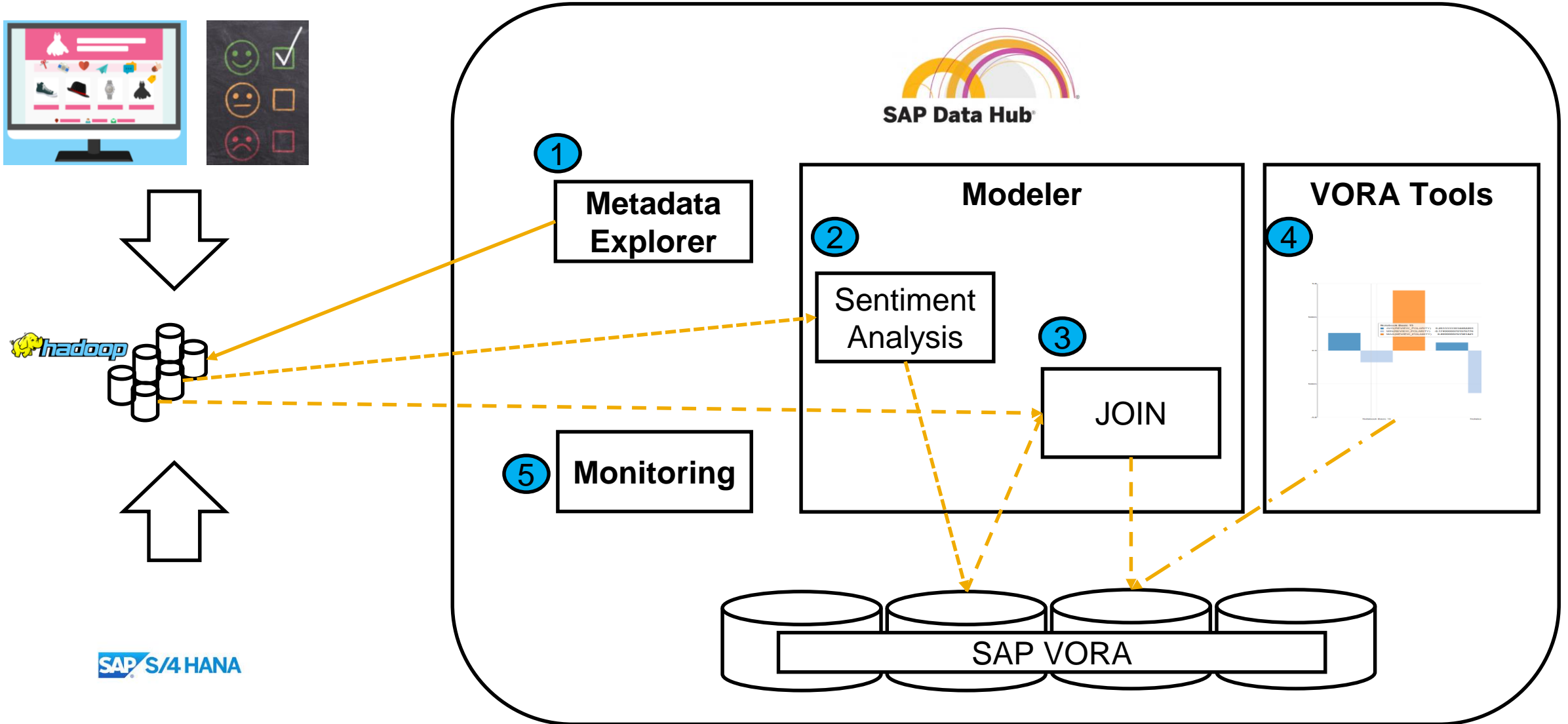
DEMO



Hands-on Exercises



Technical Academy - Scope



Welcome to the SAP Data Intelligence Hands-On

digital handout <https://tinyurl.com/SAP-DI>

SAP Data Hub Access

<https://ip-35-157-82-121.sapdatahub.com:9086>

Credentials

Tenant: default
Username: TA##
Password: Welcome01



Session	Exercise	Task
C3	1	METADATA EXPLORER
	2	EXTRACT PRODUCT REVIEWS AND PERFORM SENTIMENT ANALYSIS ON THEM
C4	3	COMBINE SENTIMENT ANALYSIS DATA WITH PRODUCT DATA
	4	CHART THE RESULTS
	5	MONITOR THE EXECUTION OF THE SCHEDULE

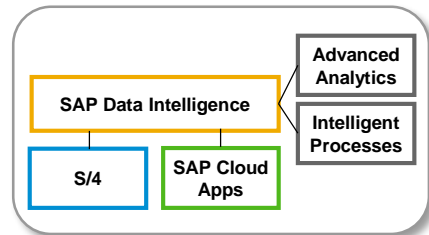


Use Case Discussion & Classification



Use **SAP Data Intelligence** to reimagine your business processes using ...

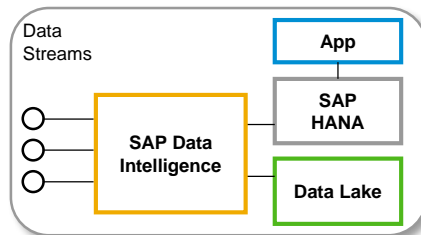
Business Application Transformation



Streamline innovation initiatives around Business Applications, supporting enterprise transformation programs

- Customer Risk Intelligence with S/4 HANA Cloud
- Timesheet Analytics with Fieldglass

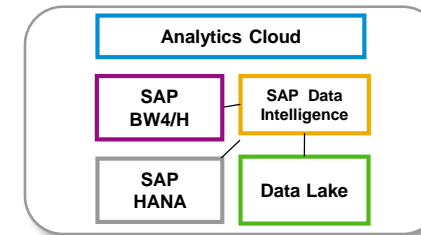
IoT Ingestion and Orchestration



Transform IoT event streams into enterprise-ready data, and derive actionable insights

- Predictive maintenance
- Manufacturing product as-a-service
- Intelligent logistics

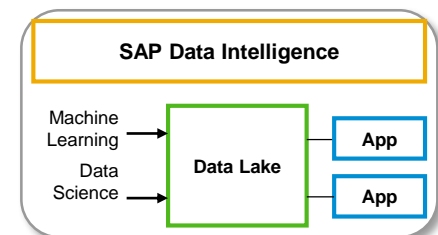
Data Warehousing



Build a multifaceted data warehouse, across diverse and distributed data assets

- Customer 360 view
- Marketing campaign effectiveness
- Renewable energy production simulation

Data Science and Machine Learning



Streamline data science and machine learning, from modeling and development to operations, across all enterprise data assets

- Customer churn prediction
- Intelligent document processing
- Image object detection & recognition

Next Steps



Next Steps

Find out more about
SAP Data Hub
sap.com/datahub

Take free
SAP Data Hub [Course](#)

Read [State of Big Data](#) Report




Try SAP Data Hub,
[developer edition](#)

Try SAP Data Hub,
[Trial edition](#)

SAP PRESS E-Bites

Introducing SAP Data Hub



Michael Eacrett
Swapan Saha
Gaëtan Saulnier

Rheinwerk Publishing

Centralize your data management with SAP Data Hub!

Introducing **SAP Data Hub**

von Michael Eacrett, Swapan Saha, Gaëtan Saulnier

E-Bite

€ 29,90

Sofort verfügbar

96 Seiten, 2019

E-Book-Formate: PDF, EPUB, MOBI, Online

SAP PRESS, ISBN 978-1-4932-1754-0

Discover how SAP Data Hub uses orchestration and workflows, data pipelines, and governance to connect and manage your data. Then, explore how it integrates with your existing tools, like SAP Data Services, SAP BW, and more. In-depth case studies will show you what challenges SAP Data Hub solves and what its implementation can look like. Integrate, process, and govern your data from a single interface!

See how SAP Data Hub simplifies the data landscape

Explore data pipelining, orchestration, and governance capabilities

Learn how SAP Data Hub integrates with existing SAP products

Schlagworte aus dem Inhalt:

SAP Data Hub, data integration, data governance, data orchestration, case studies

Inhalt

E-Bite

€ 29,90 inkl. MwSt.

Sofort verfügbar

In den Warenkorb

Mehrere Formate

Zum Download und Onlinelesen

Komfortabel nutzen

Kein Kopierschutz mit DRM

Bequem zahlen

per Kreditkarte oder PayPal

GEPRÜFT

EHI

ONLINE-SHOP

Wir sind gerne für Sie da

Hilfe zur Bestellung

Montag bis Freitag, 09:00 bis 17:30 Uhr

+49 228 42150-0

service@rheinwerk-verlag.de

https://www.rheinwerk-verlag.de/introducing-sap-data-hub_4723/

© 2019 SAP SE or an SAP affiliate company. All rights reserved. | PUBLIC

52



Introduction to Statistics for Data Science

[Join the course](#)

share



tweet



share



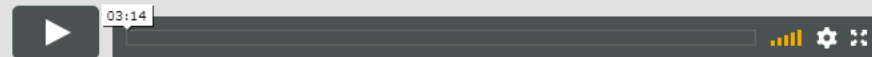
mail

Join this free online course to understand some of the basic statistical concepts and practices that are the foundations of data science and the way we analyze data. You'll learn about the fundamental principles of statistics and how it can be used in your everyday life.

October 8, 2019 - November 27, 2019

Language: English

Enter course Un-enroll



Course information

Course Summary

This course will provide you with the knowledge to understand some of the basic statistical concepts and practices that are the foundations of data science and the way we analyze data. We'll also be highlighting how statistics can be misused and abused, leading to accidental misunderstandings or deliberate distortions to support a particular prejudiced view.

Throughout this course, you'll be looking at how data can be summarized in a variety of ways to give you a descriptive overview of large data sets and their variations. We'll explore how data distributions can be understood and compared. You'll also learn how you can start finding patterns in the data, where changes in one variable may be (partly) explained by changes in another. In addition, you'll learn a little about how to estimate the likelihood of certain outcomes based on certain prior information. Finally, we'll link this up to some of the common tools available that make these kinds of analyses easier.

The course is spread over six weeks and consists of lectures and weekly assignments. Statistics can be a complex subject, but in this course, you'll revisit the fundamental principles and start to appreciate how it can be used in your everyday life. We'll focus primarily on the key principles.

Dates and Statistics

Course starts in

0341810
DAYS HOURS MINUTES

Learners enrolled:

8714

Certificate Requirements

- Gain a **record of achievement** by earning more than 50% of the maximum number of points from all graded assignments.
- Gain a **confirmation of participation** by completing at least 50% of the course material.

Find out more in the [certificate guidelines](#).

<https://open.sap.com/courses/ds0>



Related SAP TechEd Learning Journeys

- AIN2 – Transform your business processes with intelligent technologies
 - DAT3 – Tame data challenges
-

Related SAP TechEd sessions

- DAT302 – Introduction to SAP Data Intelligence and SAP Data Hub
 - DAT103 – The Data Management Strategy from SAP
 - DAT363 – Create and Manage End-to-End Data Pipelines with SAP Data Hub
 - DAT162 – Metadata Exploration and Self-Service Data Preparation with SAP Data Hub
 - DAT202 – SAP Data Hub - Data Integration with Enterprise Applications
 - DAT361 – Integrating SAP S/4HANA into SAP Data Hub: Deep Dive and Hands On
 - DAT108 – Integrating SAP S/4HANA into SAP Data Hub: Overview and Use Cases
-

Questions & Answers



Vielen Dank!!

Kontakt:



Michael Probst

Solution Advisor

M. +41 79 277 72 43

E. m.probst@sap.com



Thomas Bitterle

Solution Advisor

M. +41 79 173 59 93

E. thomas.bitterle@sap.com