



C1: SAP Data Intelligence Platform

Michael Probst, Solution Advisor, SAP Switzerland

PUBLIC

Legal disclaimer


The information in this presentation is confidential and proprietary to SAP and may not be disclosed without the permission of SAP. This presentation is not subject to your license agreement or any other service or subscription agreement with SAP. SAP has no obligation to pursue any course of business outlined in this document or any related presentation, or to develop or release any functionality mentioned therein. This document, or any related presentation, and SAP's strategy and possible future developments, products, and platforms, directions, and functionality are all subject to change and may be changed by SAP at any time for any reason without notice. The information in this document is not a commitment, promise, or legal obligation to deliver any material, code, or functionality. This document is provided without a warranty of any kind, either express or implied, including but not limited to the implied warranties of merchantability, fitness for a particular purpose, or noninfringement. This document is for informational purposes and may not be incorporated into a contract. SAP assumes no responsibility for errors or omissions in this document, except if such damages were caused by SAP's willful misconduct or gross negligence.

All forward-looking statements are subject to various risks and uncertainties that could cause actual results to differ materially from expectations. Readers are cautioned not to place undue reliance on these forward-looking statements, which speak only as of their dates, and they should not be relied upon in making purchasing decisions.



Please opt-in now

<https://www.sap.com/germany-emea/optin>



DATA

HAS NEVER BEEN MORE
VALUABLE

Take Picture

Age(Days)

6

Mileage(Kilometers)


100000



Done

„60“

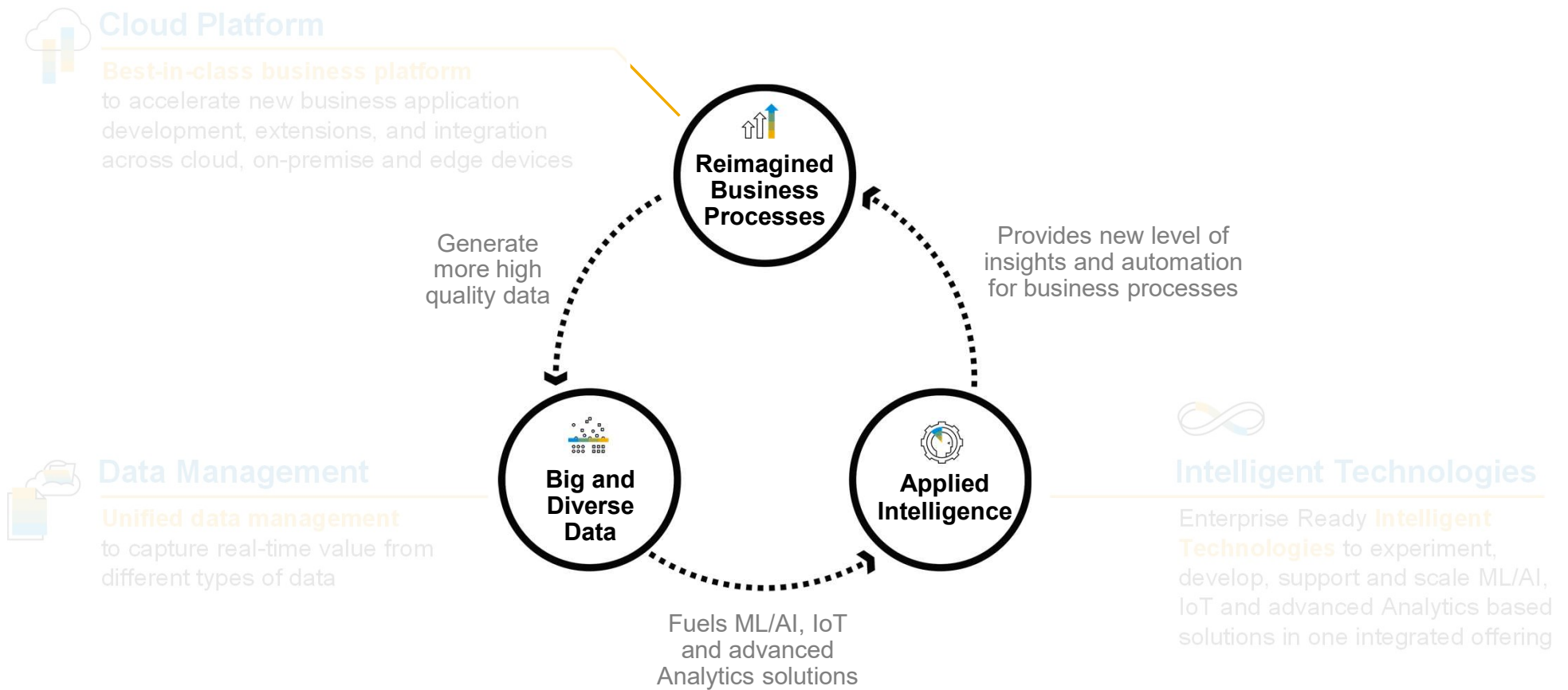




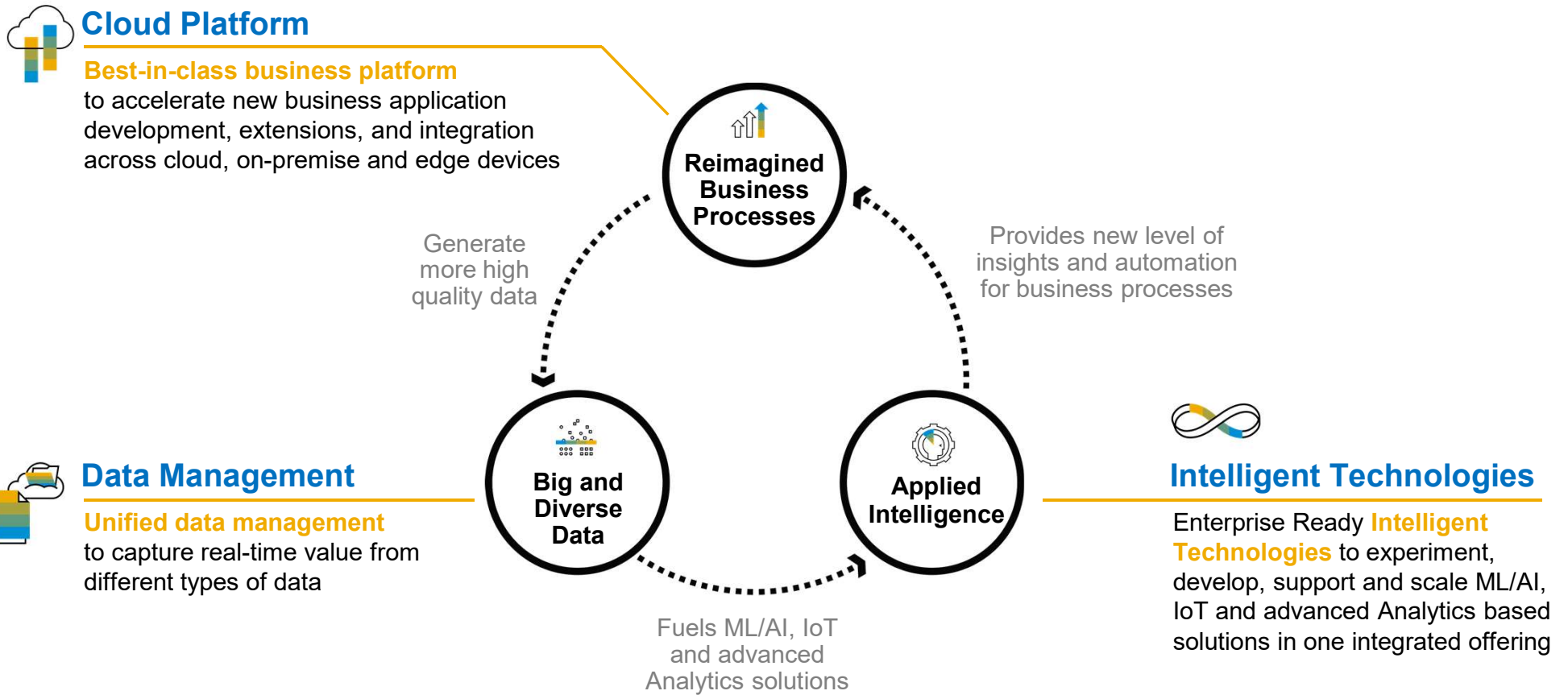
DATA

DATA DRIVEN
Innovations

The Virtuous Cycle of Innovation

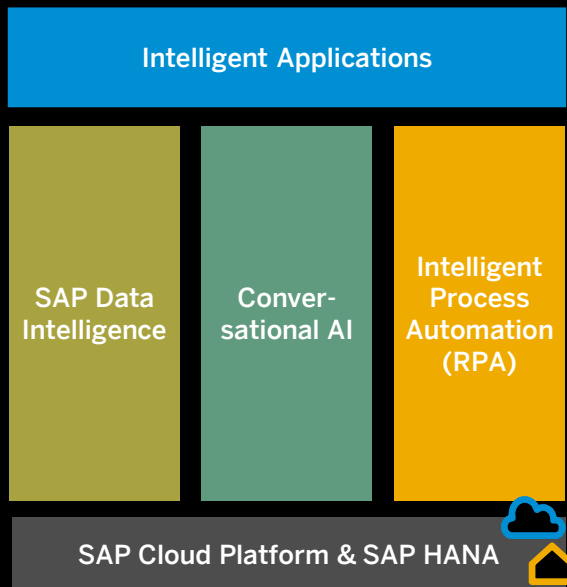


The Virtuous Cycle of Innovation



Data enabled Innovations

SAP Leonardo Machine Learning



- How SAP ML drives the intelligent enterprise:



Intelligent Applications

ML in-built to SAP Applications



SAP Data Intelligence: Enterprise machine learning at scale, in production



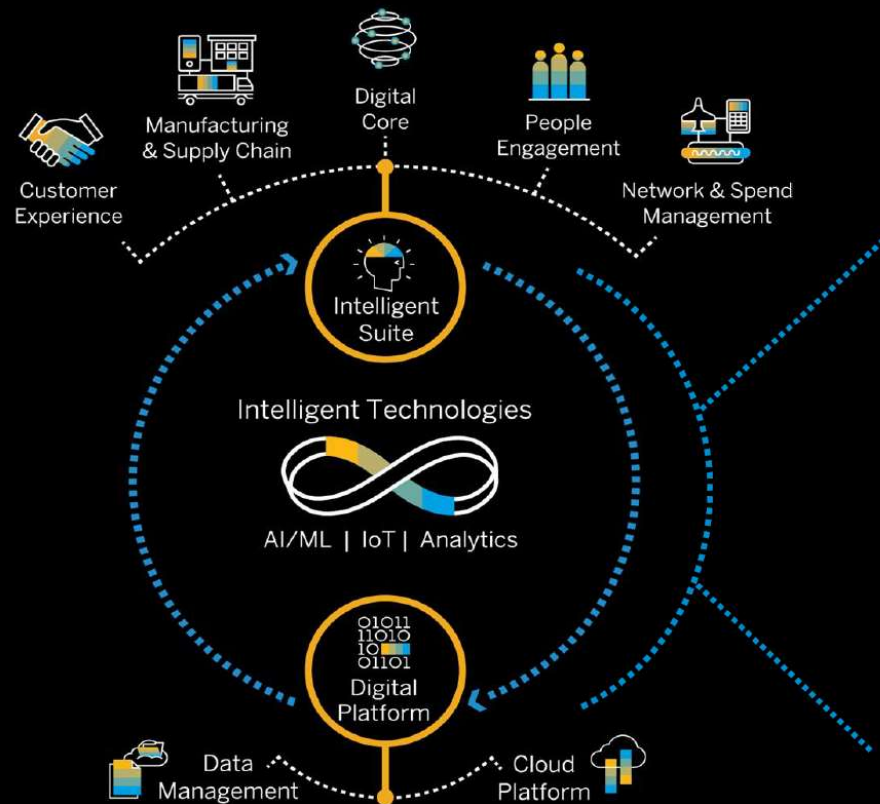
SAP Conversational AI: Interacting with computers using natural human language



Intelligent Robotic Process Automation: Executing repetitive human tasks

- Key takeaways & Q&A

Insight into the Intelligent Enterprise – Machine Learning



70+ unique machine learning enabled scenarios in SAP by end of year

- automation
- user experience

SAP Leonardo Machine Learning Applications

SAP Leonardo AI Business Services



Document Classification

Classification of unstructured documents



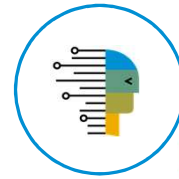
Document Information Extraction

Automatically extract information from unstructured documents



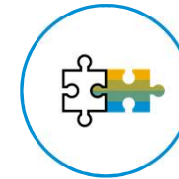
Service Ticket Intelligence

Automatic ticket classification and solution recommendation



Data Attribute Recommendation

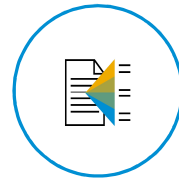
Automates creation, maintenance, and management of structured data



Intelligent Invoice Processing

Planned 19Q4

Recommendation of accounting objects to semi-automate FI invoice processing



Named Entity Recognition

Planned 19Q4

Locate and classify named entity mentions in unstructured text into pre-defined categories

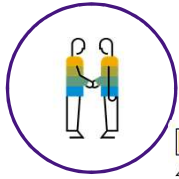
Machine Learning Business Applications (embedded)



GR/IR reconciliation

S/4HANA

Automates exception handling processes for all purchase order items



Learning Recommender and People Like Me

SuccessFactors

Helps employees upskill and grow with personalized recommendations for learning and career



Product Recommender

C/4 Commerce - Planned

Provides meaningful product recommendations and improved search results in web shop scenarios



Intelligent Accruals

S/4HANA - Planned

Propose reliable of accrual amounts

Standalone Applications



Cash Application

Automatically match payments with open receivables and clear payments



Cash Application add-on for contract accounting

Planned 20Q1

Automates clearing of payments with open receivables



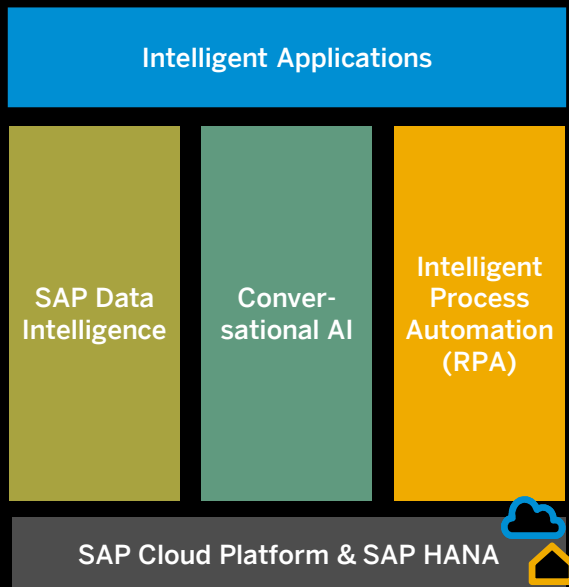
Intelligent Insights for Procurement

S/4HANA

Automates and simplifies procurement processes

Data enabled Innovations

SAP Leonardo Machine Learning



- How SAP ML drives the intelligent enterprise:



Intelligent Applications

ML in-built to SAP Applications



SAP Data Intelligence: Enterprise machine learning at scale, in production



SAP Conversational AI: Interacting with computers using natural human language

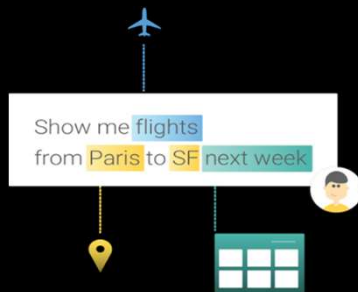


Intelligent Robotic Process Automation: Executing repetitive human tasks

- Key takeaways & Q&A

SAP Conversational AI provides a powerful, enterprise-grade platform

Accurate NLP



Multilingual: Any language



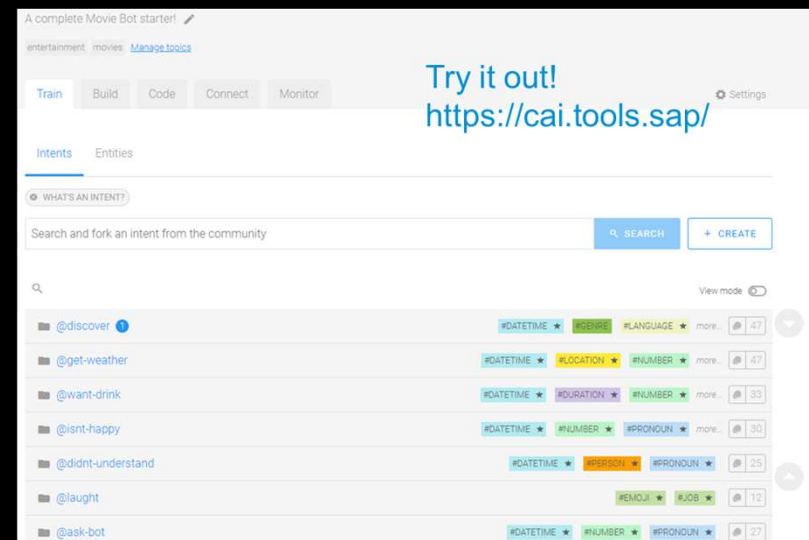
Multi-Channel



By 2020, **25%** of organizations will implement chatbot technology in customer services and **20%** plan to abandon their mobile apps.
- Gartner

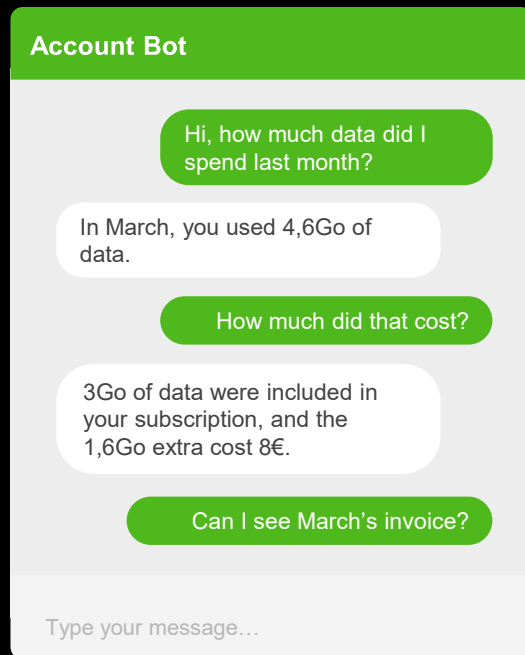
End-to-End Collaborative Bot Building Platform

Train | Build | Code | Connect | Monitor

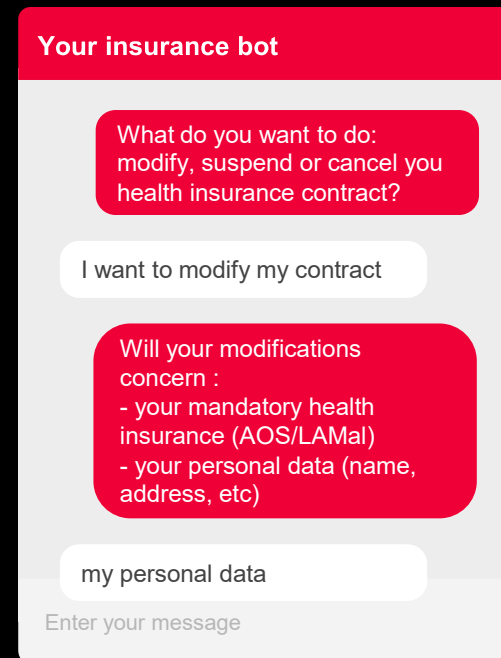


SAP Conversational AI

Example implementations in mission-critical processes



SAP CAI manages 22% of all customer requests for topics like invoices and PIN resets for one of the largest telecom providers.

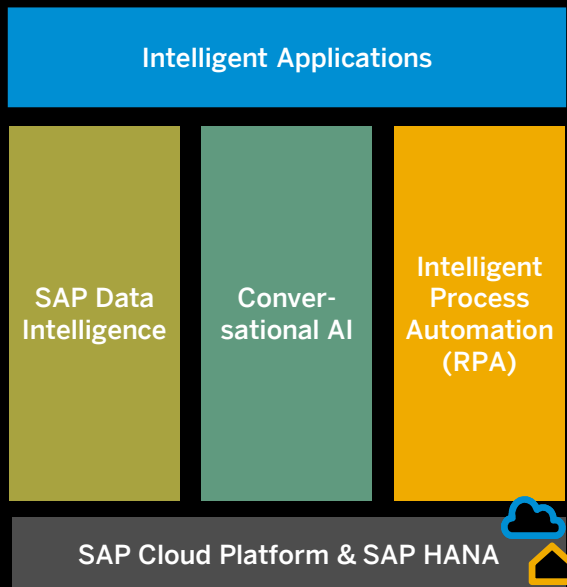


A Swiss insurance company allows customers to modify contracts via the bot, so the service team avoids adding staff during peak periods.



Data enabled Innovations

SAP Leonardo Machine Learning



- How SAP ML drives the intelligent enterprise:



Intelligent Applications

ML in-built to SAP Applications



SAP Data Intelligence: Enterprise machine learning at scale, in production



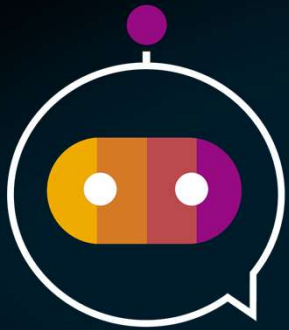
SAP Conversational AI: Interacting with computers using natural human language



Intelligent Robotic Process Automation: Executing repetitive human tasks

- Key takeaways & Q&A

What is **SAP Intelligent RPA**?



Robotic Process Automation (RPA) accelerates digital transformation of business processes by automatically replicating tedious actions that have no added value.

Attended

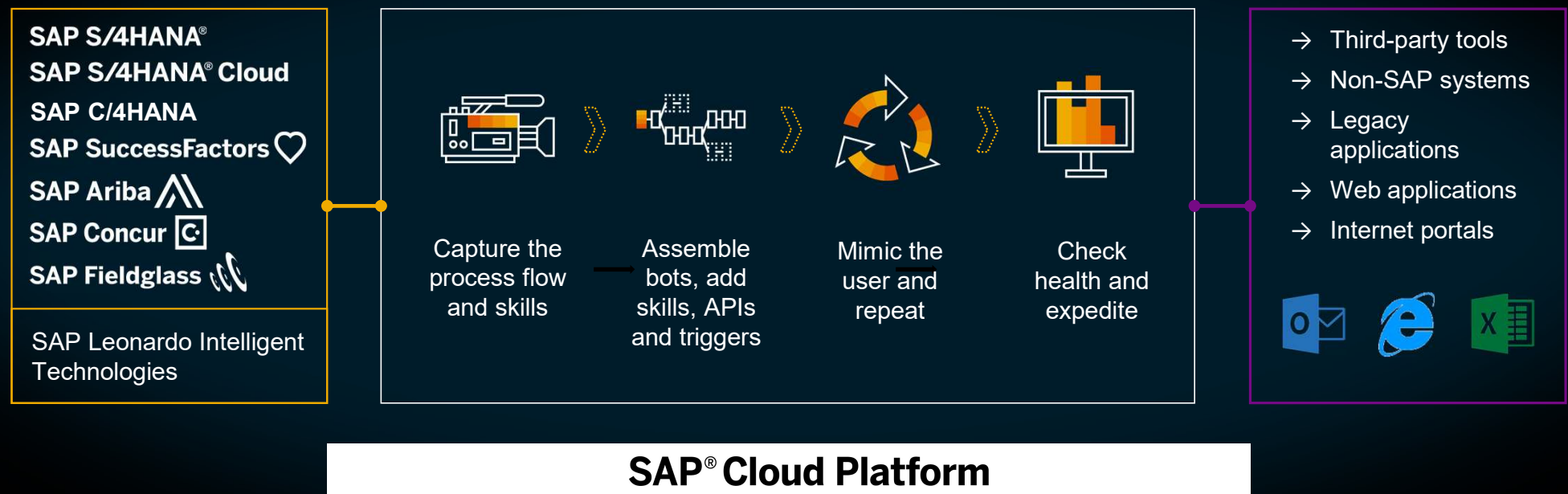
Partially automated process, where robots are co-working with humans, also called **Robotic Desktop Automation (RDA)**

Unattended

Fully automated process, where robots are working autonomously with human supervision only

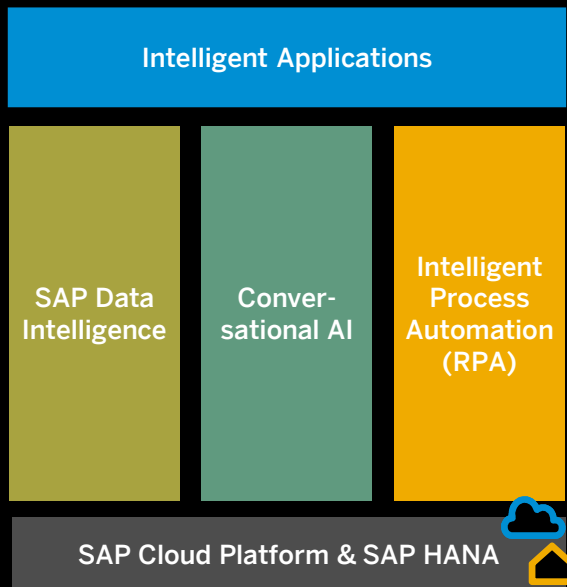
SAP Intelligent Robotic Process Automation

Unified cloud solution including on-premise automation tools



Data enabled Innovations

SAP Leonardo Machine Learning



- How SAP ML drives the intelligent enterprise:



Intelligent Applications

ML in-built to SAP Applications



SAP Data Intelligence: Enterprise machine learning at scale, in production



SAP Conversational AI: Interacting with computers using natural human language



Intelligent Robotic Process Automation: Executing repetitive human tasks

- Key takeaways & Q&A

Enterprises are struggling with complexity

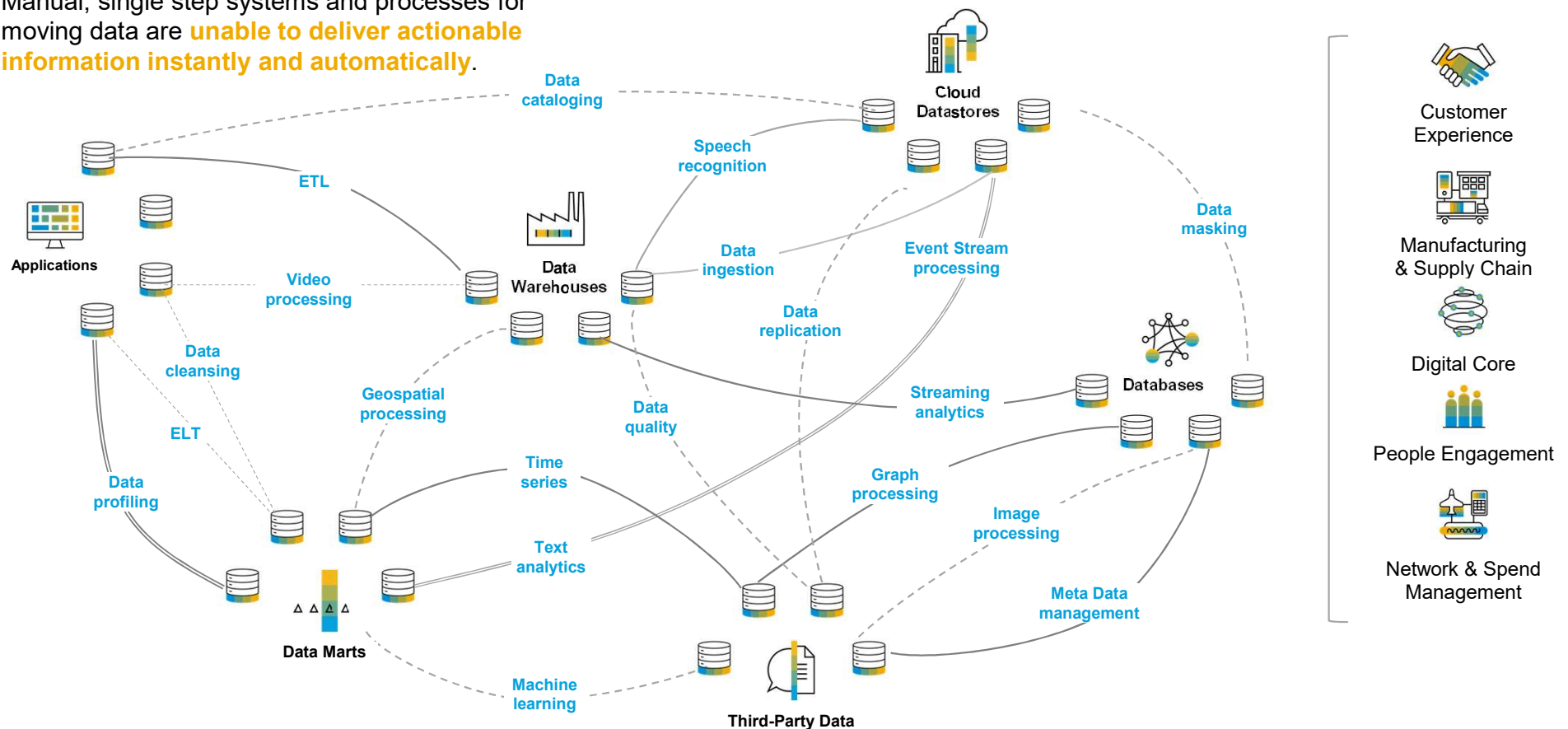


74% say their data landscape is so complex
that it limits agility

Data sprawl led to tool sprawl, causing siloed data and limited visibility
to global data assets

Data deluge: Distributed landscapes, diverse data, manual siloed operations

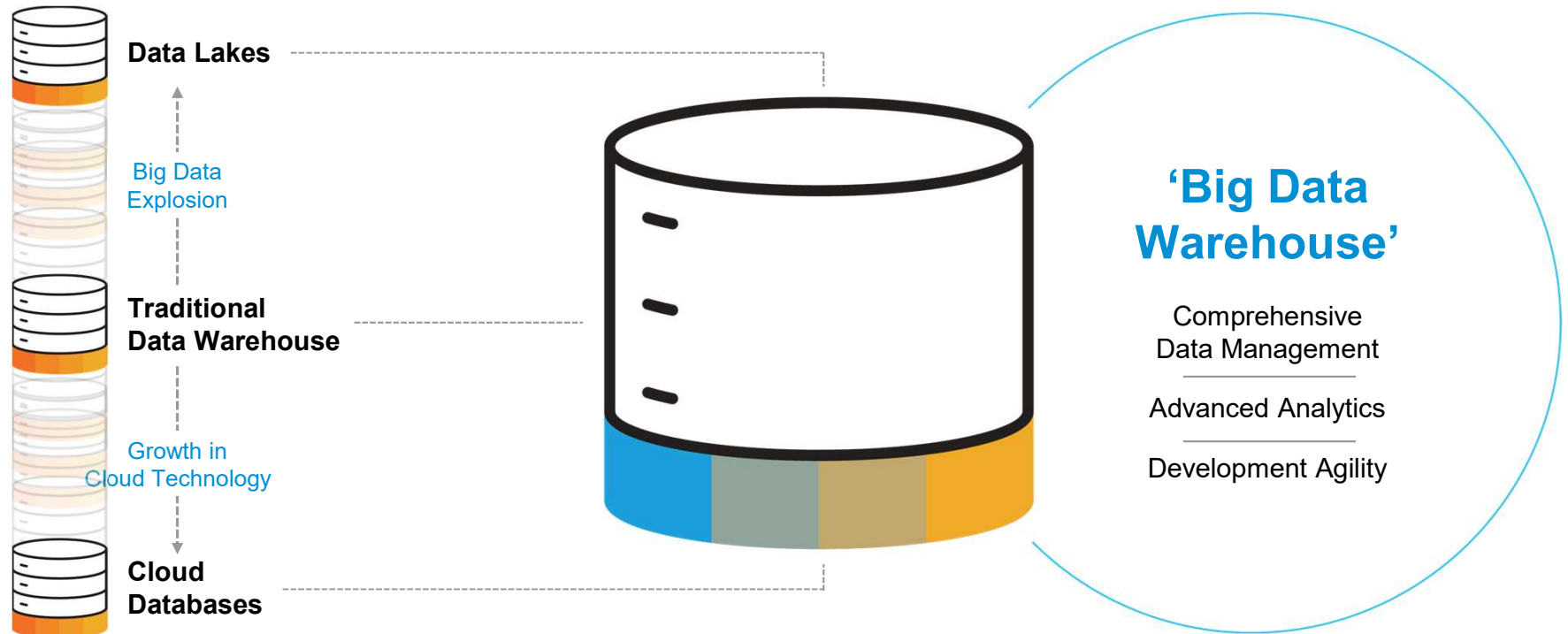
Manual, single step systems and processes for moving data are **unable to deliver actionable information instantly and automatically**.





SAP Data Management

The Road to an Intelligent Enterprise



Building Data Driven Applications with Intelligence

On-premise & public cloud

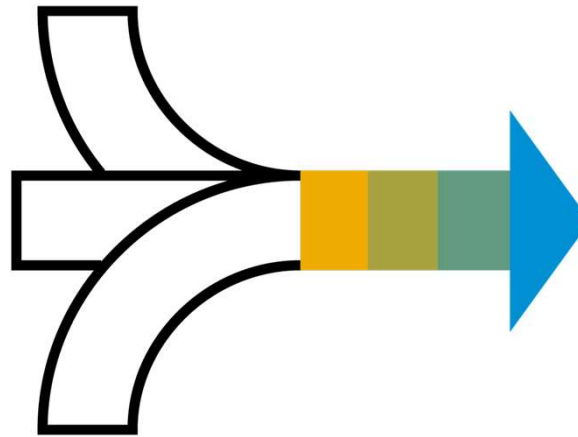
- Discover, refine, govern, orchestrate any type, variety, and volume of data across your distributed data landscape
- Focuses on complex data orchestration & pipelining

Cloud Service on SAP Cloud Platform

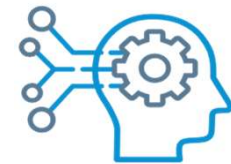
- Includes all SAP Data Hub functionality
- Additional capabilities by GA
 - Jupyter Notebook integration
 - Scenario manager to manage and deploy ML models
 - Operations cockpit – manage and monitor execution

Today

SAP Data Hub



SAP Data Intelligence



Intelligent Applications

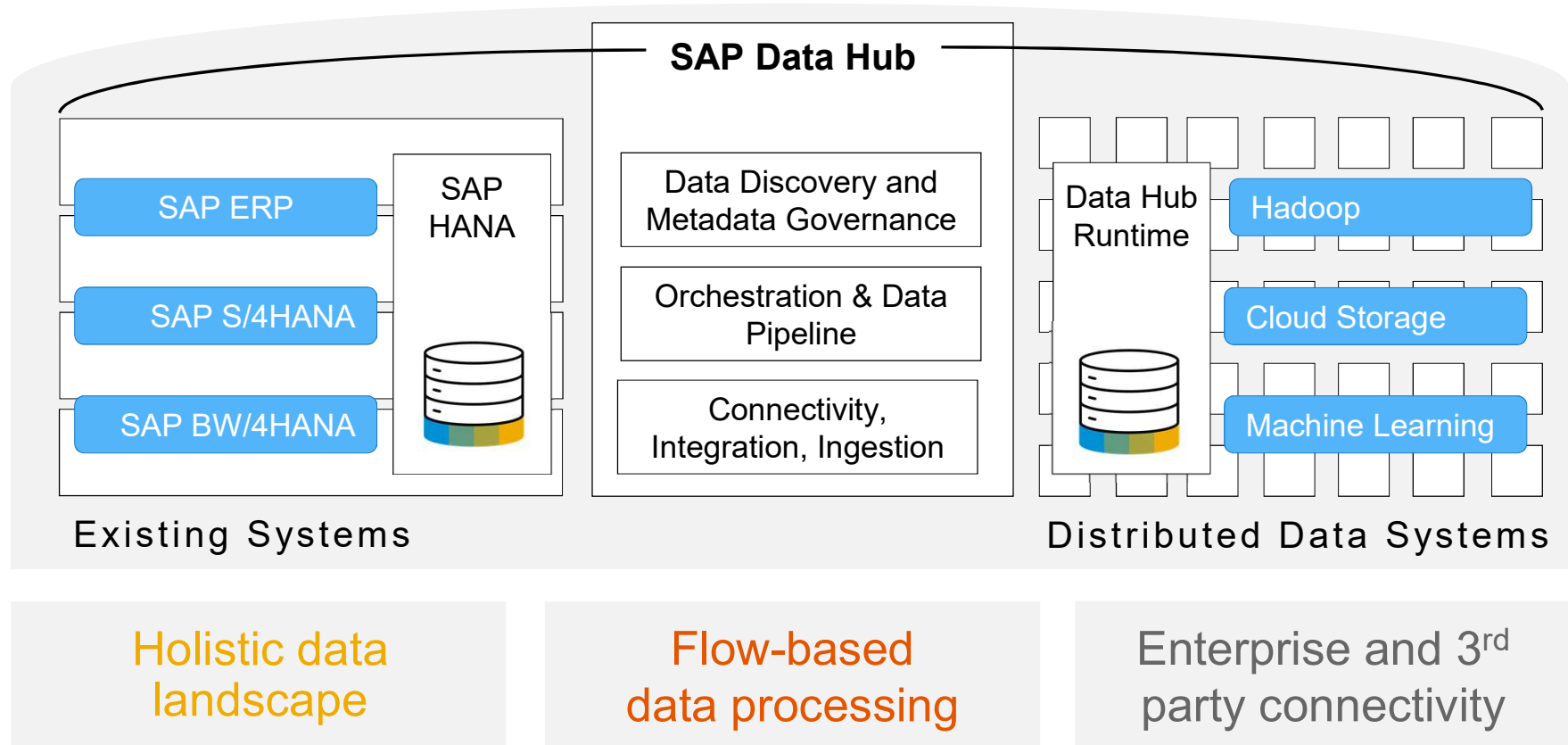
**Feature Parity between
SAP Data Hub OP &
SAP Data Intelligence cloud**

- Product update frequency
 - Cloud updates once a quarter
 - OP updates twice a year

Tomorrow

Technical Overview

Building blocks

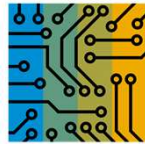


Predictive quality in manufacturing plant

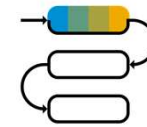
The business objective: improving Quality Management process



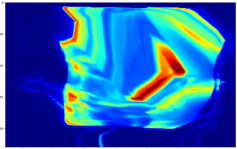
Big and Diverse
Data



Applied
Intelligence



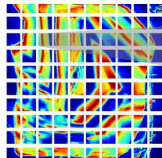
Reimagined
Business Processes



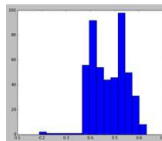
IR images of
components

| | | |
|------------|-------|-----|
| PRHOO01007 | 1,103 | 803 |
| PRHOO01008 | 1,100 | 800 |
| PRHOO01009 | 1,100 | 800 |
| PRHOO01010 | 1,100 | 800 |
| PRHOO01011 | 1,100 | 800 |
| PRHOO01012 | 1,100 | 800 |
| PRHOO01013 | 1,099 | 799 |
| PRHOO01014 | 1,100 | 800 |
| PRHOO01015 | 1,102 | 802 |

Pressure sensor
measures



ML-based extraction
of image features



Predictive Analytics

Smart Quality App

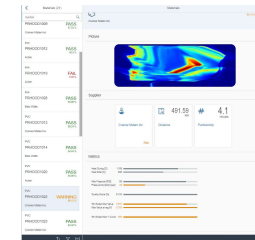


Table Name:
PRHJAM

| Columns | Indices | Further Properties | Runtime Information |
|---------------|---------------|--------------------|---------------------|
| Name | SQL Data Type | DL | Col |
| 1 MATERIAL_ID | NVARCHAR | 10 | STR |
| 2 HEAT1 | INTEGER | | INT |
| 3 HEAT2 | INTEGER | | INT |
| 4 PRESSMAX | INTEGER | | INT |
| 5 PRESSUR | INTEGER | | INT |

Material
Master

Use **SAP Data Hub** to reimagine your business processes using ...

Business Application Transformation



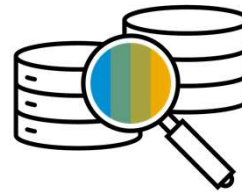
Streamline innovation initiatives around Business Applications, supporting enterprise transformation programs

IoT Ingestion and Orchestration



Transform IoT event streams into enterprise-ready data, and derive actionable insights

Data Warehousing



Build a multifaceted data warehouse, across diverse and distributed data assets

Data Science and Machine Learning



Streamline data science and machine learning, from modeling and development to operations, across all enterprise data assets

Metadata Catalog and Governance

Automate metadata discovery, understand data sources, prepare and govern according to data standards, privacy, and security

Building Data Driven Applications with Intelligence

On-premise & public cloud

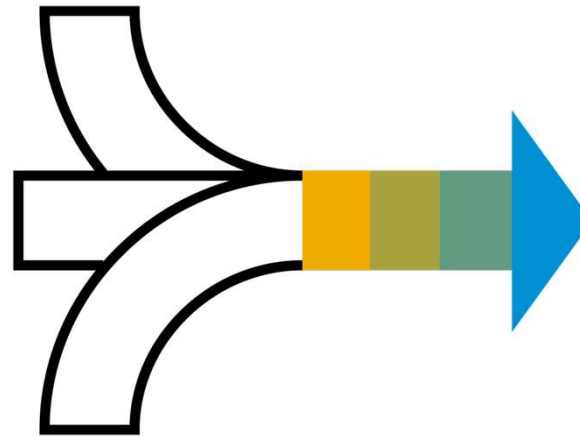
- Discover, refine, govern, orchestrate any type, variety, and volume of data across your distributed data landscape
- Focuses on complex data orchestration & pipelining

Cloud Service on SAP Cloud Platform

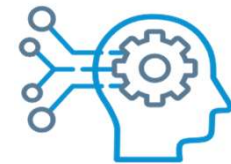
- Includes all SAP Data Hub functionality
- Additional capabilities by GA
 - Jupyter Notebook integration
 - Scenario manager to manage and deploy ML models
 - Operations cockpit – manage and monitor execution

Today

SAP Data Hub



SAP Data Intelligence



Intelligent Applications

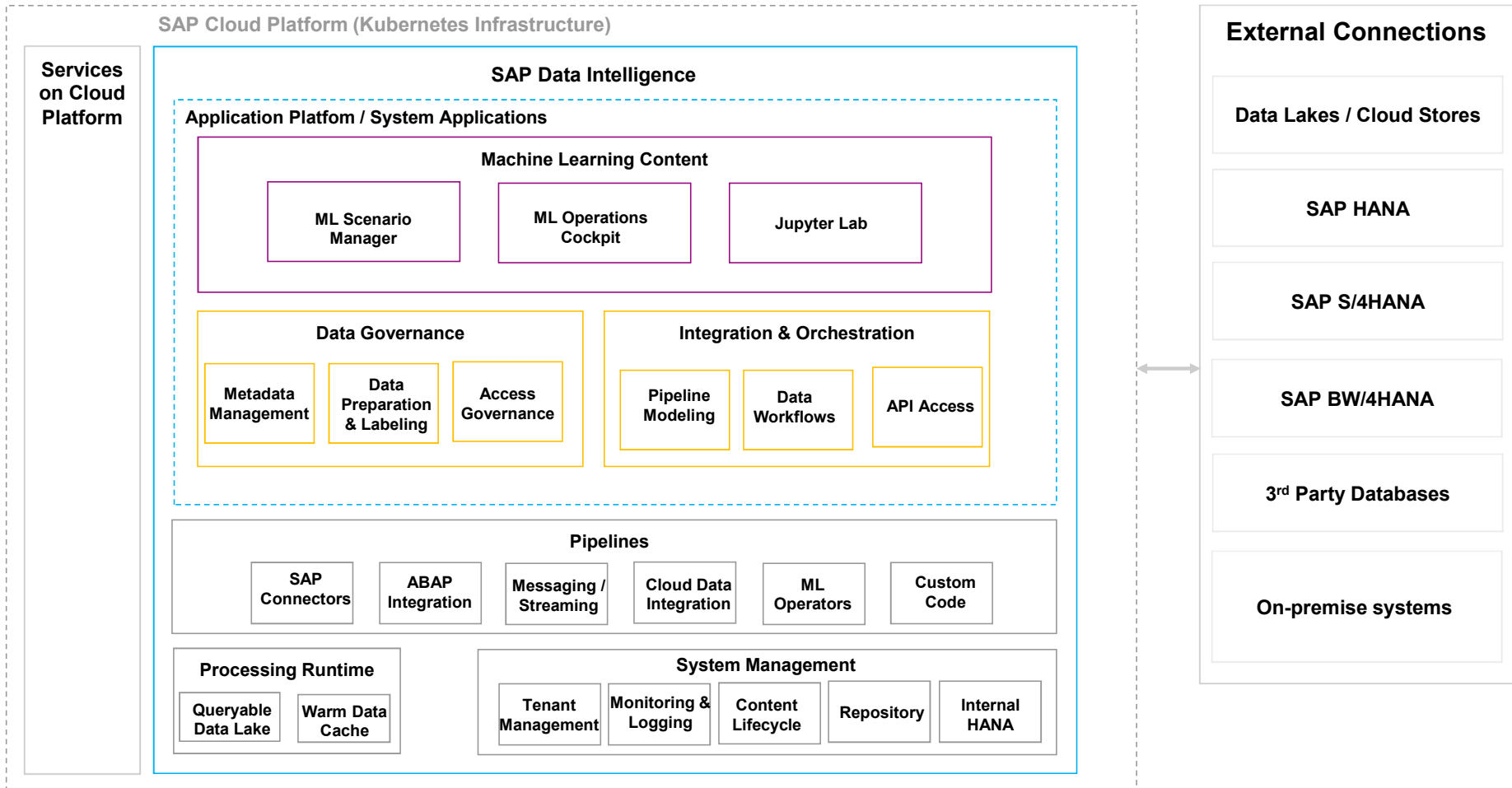
**Feature Parity between
SAP Data Hub OP &
SAP Data Intelligence cloud**

- Product update frequency
 - Cloud updates once a quarter
 - OP updates twice a year

Tomorrow

SAP Data Intelligence

Architecture View



Creating customer specific Innovation - Generic with SAP Data Intelligence

Create powerful data pipelines to **leverage** your data projects and to **orchestrate** the data processing

Harness the advanced machine learning content to **accelerate** and **scale** and **automate** your Data Science projects

Manage metadata across a diverse data landscape and **create** a metadata repository



SAP Data Intelligence is a **comprehensive solution to deliver data-driven innovation and intelligence across the enterprise**, unifying scalable enterprise AI and intelligent information management.



**Access &
connect data**



**Govern &
discover data**



**Prepare &
label data**



**Build scalable
& flexible
data pipelines**




**Deploy & integrate
intelligent
applications**



**Monitor &
orchestrate
the lifecycle**



And now what ... ?



Driving Business Results with Big Data

HANA Express ([here](#))
Data Hub Developer Edition ([here](#))
Vora GitHub Code Snippets ([here](#))
HANA Academy on [YouTube](#)
Open SAP Course ([here](#))

Self Learning



Workshop



SAP Tech Academy

Vielen Dank!!

Kontakt:



Michael Probst

Solution Advisor

M. +41 79 277 72 43

E. m.probst@sap.com