



Power BI

Sales Dashboard

SALES DASHBOARD

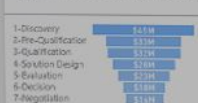
Ask a question about the data on this dashboard

How to ask

Actual vs. target revenue (\$)



Opportunity value by pipeline pha..



Actual margin

15%

Target margin

16%

Discount by category



Average sales (\$)

\$1.08M

Average quota (\$)

\$1.1M

Sales Spreadsheet Summary



Variance to target sales



Opportunity value by product category



Revenue by month (current year vs. last year)



Sales Spreadsheet Summary

Sum of Sales	Column Labels
Row Labels	Canada
Channel Partners	\$
Enterprise	\$
Small Business	\$
Grand Total	\$ 24

Planned v actual category mix



Countries not meeting quota



# What's new in Power BI

Kristian Bubalo

Cloud Solution Architect

[kristian.bubalo@microsoft.com](mailto:kristian.bubalo@microsoft.com)

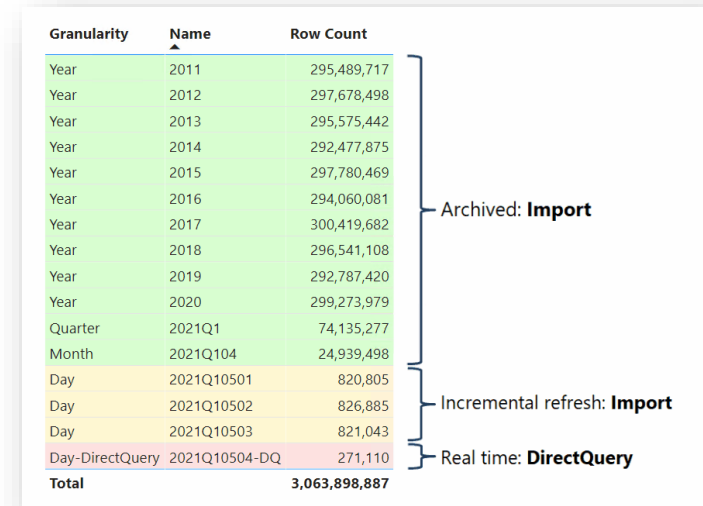


# What's New

- Hybrid Tables (Public Preview)
- Power BI integration into PowerPoint
- Power BI Datamarts (Preview)
- Field Parameters (Preview)
- Preview data in Dataset Details page
- General Availability ExecuteQueries REST API
- New DAX function: NETWORKDAYS
- Conditional Format for Labels
- Multiple Audiences for PBI Apps (Preview)

# Hybrid Tables (Public Preview)

- Hybrid tables enables us to have incremental refresh augmented with near real-time data
- Combine DirectQuery and Import mode in **one** table
- Power BI Premium feature



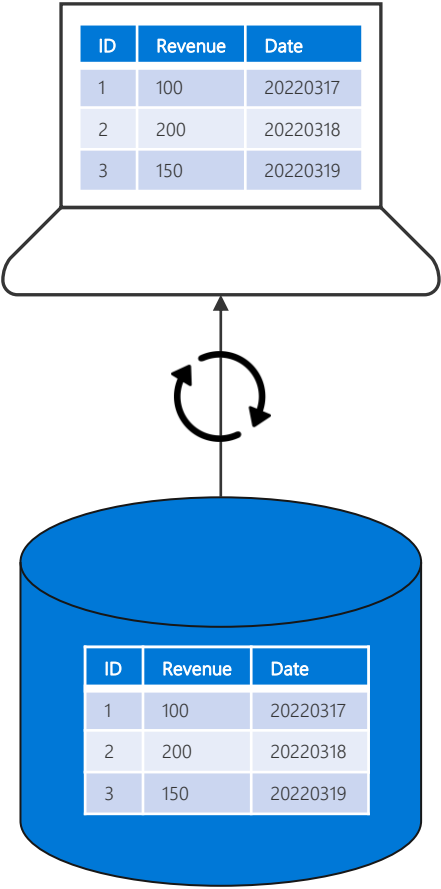
The screenshot shows a table with three columns: Granularity, Name, and Row Count. The table is divided into three sections by brackets on the right: 'Archived: Import' (years 2011-2020), 'Incremental refresh: Import' (quarters and months for 2021), and 'Real time: DirectQuery' (daily data for 2021Q10504-DQ). The total row count is 3,063,898,887.

Granularity	Name	Row Count
Year	2011	295,489,717
Year	2012	297,678,498
Year	2013	295,575,442
Year	2014	292,477,875
Year	2015	297,780,469
Year	2016	294,060,081
Year	2017	300,419,682
Year	2018	296,541,108
Year	2019	292,787,420
Year	2020	299,273,979
Quarter	2021Q1	74,135,277
Month	2021Q104	24,939,498
Day	2021Q10501	820,805
Day	2021Q10502	826,885
Day	2021Q10503	821,043
Day-DirectQuery	2021Q10504-DQ	271,110
Total		3,063,898,887

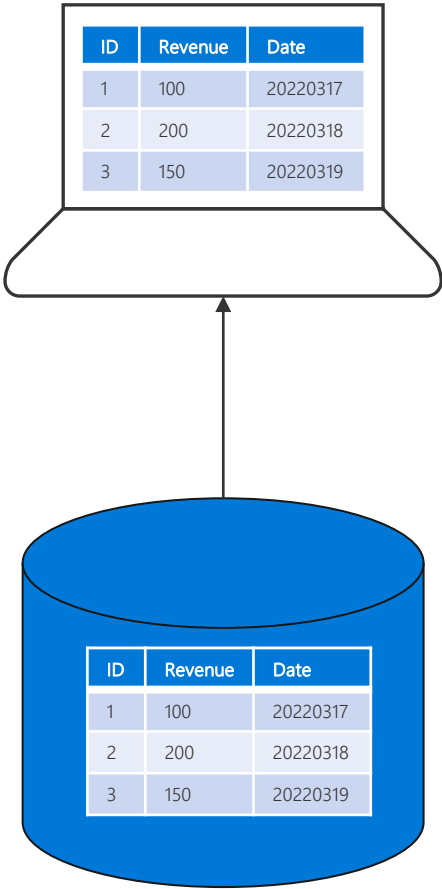
<https://powerbi.microsoft.com/en-us/blog/announcing-public-preview-of-hybrid-tables-in-power-bi-premium/>

# Storage Modes

## Import Mode



## DirectQuery Mode



# Benefits of Storage Mode

## Import Mode

- Performance
- Full flexibility  
Data Model & DAX
- Supporting all Data Sources

## DirectQuery

- Near-Real Time Data
- DB handling Security
- Going beyond data limit



# Combining both worlds

Toyota Prius

The first car with hybrid engine in mass production



# Combining both worlds – Hybrid tables

- Hybrid tables enables us to have incremental refresh augmented with near real-time data
- Combine DirectQuery and Import mode in **one** table
- Power BI Premium feature

Granularity	Name	Row Count
Year	2011	295,489,717
Year	2012	297,678,498
Year	2013	295,575,442
Year	2014	292,477,875
Year	2015	297,780,469
Year	2016	294,060,081
Year	2017	300,419,682
Year	2018	296,541,108
Year	2019	292,787,420
Year	2020	299,273,979
Quarter	2021Q1	74,135,277
Month	2021Q104	24,939,498
Day	2021Q10501	820,805
Day	2021Q10502	826,885
Day	2021Q10503	821,043
Day-DirectQuery	2021Q10504-DQ	271,110
Total		3,063,898,887

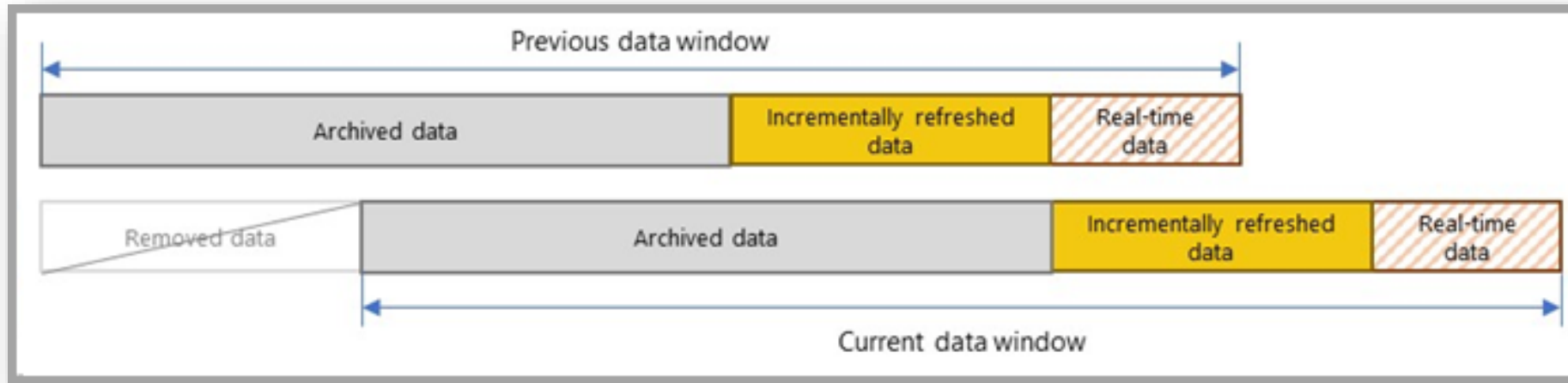
Archived: **Import**

Incremental refresh: **Import**

Real time: **DirectQuery**

<https://powerbi.microsoft.com/en-us/blog/announcing-public-preview-of-hybrid-tables-in-power-bi-premium/>

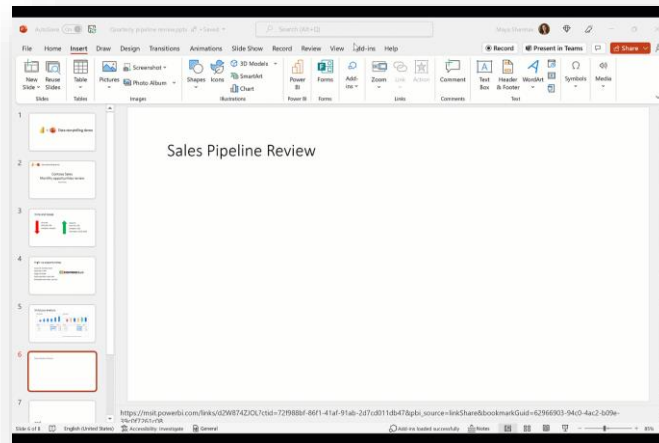
# Hybrid Tables – How it works





# Power BI integration into PowerPoint

- Add PBI Reports to your PPTX Slides and interact with it
- Automatically through PBI Service or the build-in Add-in
- Check Pascal Schär Session  
(C3 Unternehmensdaten überzeugend einsetzen)



- <https://powerbi.microsoft.com/en-us/blog/tell-a-story-with-your-data-announcing-the-all-new-power-bi-integration-for-powerpoint/>

# Power BI Datamarts

- Power BI Premium (per User) required
- Build a relational Database in a low-code manner
- Workloads up to 100GB
- Ingest and Prep Data, Add Semantic Layer and use DAX, Security is given through RLS, MIP, etc.
- Use Datamarts in Pipelines, share it with others like a Dataset
- <https://powerbi.microsoft.com/en-us/blog/announcing-public-preview-of-datamart-in-power-bi/>

# Field Parameters (Preview)

- Change dynamically measures and dimensions
- Limitations
  - AI visuals and Q&A is not supported
  - You can't choose "None" or no fields  
→ it's the same as selecting all fields
  - You can't use implicit measures  
→ you need to create explicit measures

**Parameters**

Add parameters to visuals and DAX expressions so people can use slicers to adjust the inputs and see different outcomes. [Learn more](#)

What will your variable adjust?  
Fields

Name  
Parameter

Add and reorder fields  
Select fields from the Fields section

Fields

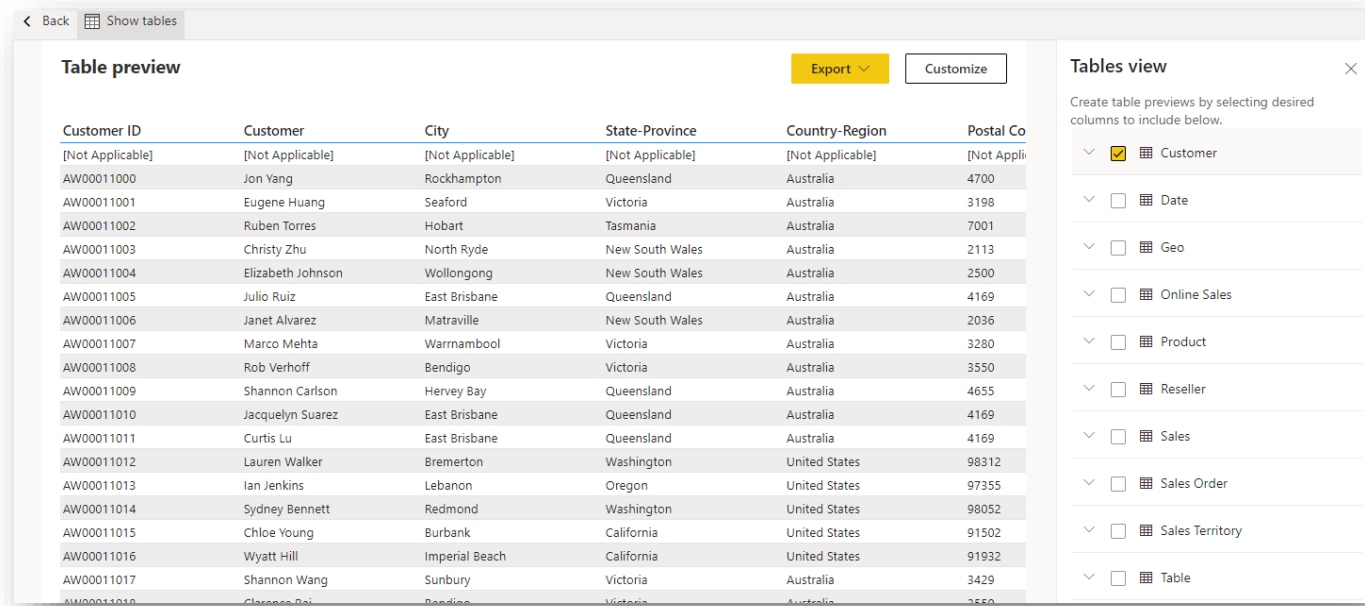
- > KPIs
- > Date
- > dimCity
- > dimCustomer
- > dimEmployee
- > dimStockItems
- > factSales
- > Parameter\_Dim
- > Parameter\_Fact
- > Top N Items Parameter

☒ Add slicer to this page

Create Cancel

# Preview data in Dataset Details page

- Get a preview of your data on the Dataset Hub
- Export it if needed
- Customization possible



The screenshot displays the 'Table preview' section of the Power BI Dataset Details page. It features a table with six columns: Customer ID, Customer, City, State-Province, Country-Region, and Postal Code. The table contains 18 rows of data, starting with a header row and followed by 17 data rows. To the right of the table, there are two buttons: 'Export' (highlighted in yellow) and 'Customize'. On the far right, a 'Tables view' sidebar is open, showing a list of tables with checkboxes to select columns for preview. The 'Customer' table is selected, and its columns are listed below it.

Customer ID	Customer	City	State-Province	Country-Region	Postal Co
[Not Applicable]	[Not Applicable]	[Not Applicable]	[Not Applicable]	[Not Applicable]	[Not Appli
AW00011000	Jon Yang	Rockhampton	Queensland	Australia	4700
AW00011001	Eugene Huang	Seaford	Victoria	Australia	3198
AW00011002	Ruben Torres	Hobart	Tasmania	Australia	7001
AW00011003	Christy Zhu	North Ryde	New South Wales	Australia	2113
AW00011004	Elizabeth Johnson	Wollongong	New South Wales	Australia	2500
AW00011005	Julio Ruiz	East Brisbane	Queensland	Australia	4169
AW00011006	Janet Alvarez	Matraville	New South Wales	Australia	2036
AW00011007	Marco Mehta	Warrnambool	Victoria	Australia	3280
AW00011008	Rob Verhoff	Bendigo	Victoria	Australia	3550
AW00011009	Shannon Carlson	Hervey Bay	Queensland	Australia	4655
AW00011010	Jacquelyn Suarez	East Brisbane	Queensland	Australia	4169
AW00011011	Curtis Lu	East Brisbane	Queensland	Australia	4169
AW00011012	Lauren Walker	Bremerton	Washington	United States	98312
AW00011013	Ian Jenkins	Lebanon	Oregon	United States	97355
AW00011014	Sydney Bennett	Redmond	Washington	United States	98052
AW00011015	Chloe Young	Burbank	California	United States	91502
AW00011016	Wyatt Hill	Imperial Beach	California	United States	91932
AW00011017	Shannon Wang	Sunbury	Victoria	Australia	3429
AW00011018	Clarence Bai	Bendigo	Victoria	Australia	3550

<https://powerbi.microsoft.com/en-us/blog/preview-data-is-now-available-in-the-dataset-details-page/>

# GA ExecuteQueries REST API

- Using this REST API you can query Power BI Datasets from any platform
- No XMLA Endpoint required
- Only Workspace V2 and Admin Setting enabled needed
- OOTB Power Automate Action available!



- <https://powerbi.microsoft.com/en-us/blog/announcing-general-availability-of-the-executequeries-rest-api/>
- <https://powerbi.microsoft.com/en-us/blog/unlocking-new-self-service-bi-scenarios-with-executequeries-support-in-power-automate/>

# Nex DAX function: NETWORKDAYS

- Calculate net working days between two dates
- Weekend is defined per Default as Saturday & Sunday, can be defined
- Holidays table can be included to exclude those days in the calculation
- Doc is [here](#)

```
WorkingDays =
```

```
VAR StartDate = DATE(2022, 10, 1)
```

```
VAR EndDate = dt"2022-10-30"
```

```
VAR WeekendStart = 7
```

```
VAR Holidays = {DATE(2022, 10, 3), DATE(2022, 10, 4)}
```

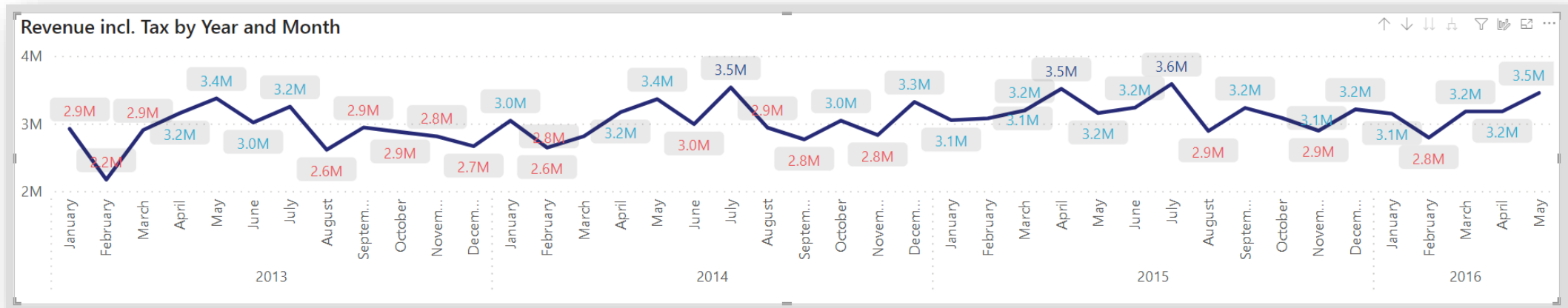
```
Return
```

```
    NETWORKDAYS(StartDate, EndDate, WeekendStart, Holidays)
```



# Conditional Format Update

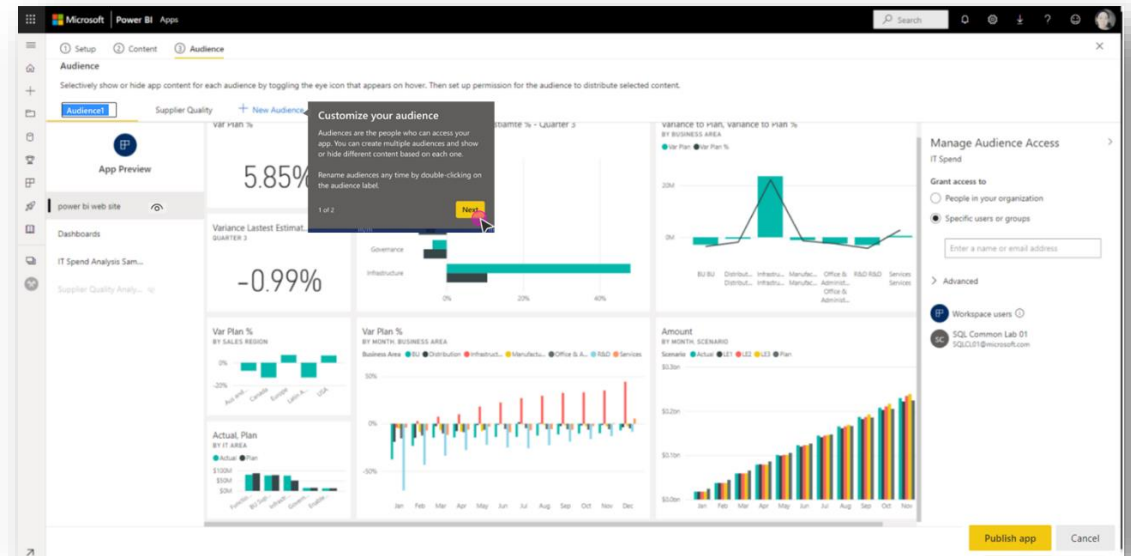
- Use Conditional Format on Data Labels
- Now calculating on each data point instead of whole visual
- Can't use "Legend Field" right now, will be possible in near future



<https://powerbi.microsoft.com/en-us/blog/power-bi-august-2022-feature-summary/#post-20399-Toc110518263>

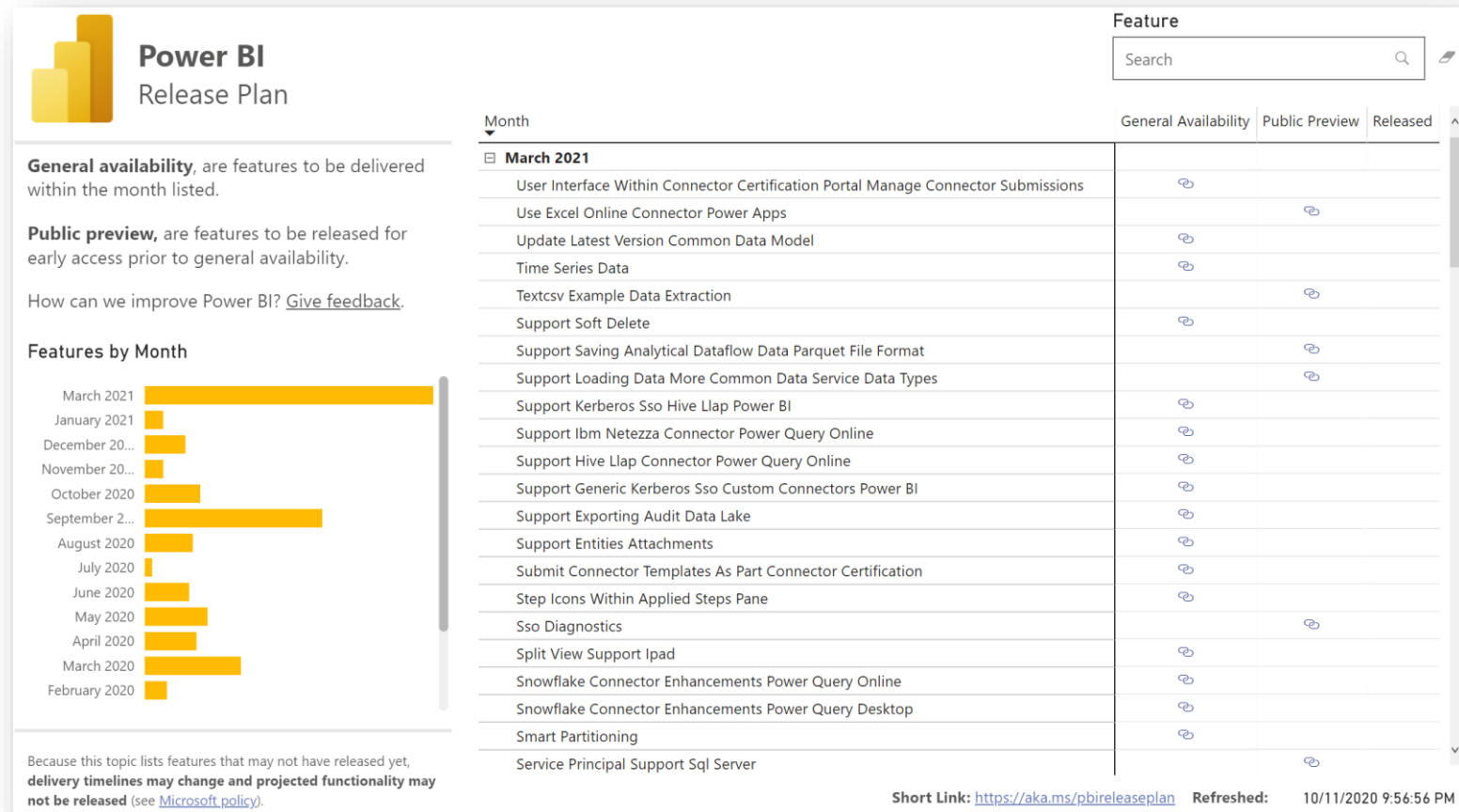
# Multiple Audiences for PBI Apps (Preview)

- Create multiple audience groups within the same App
- Assign different permissions to each group
- No need to create multiple workspaces
- 10 groups possible



<https://powerbi.microsoft.com/en-us/blog/announcing-public-preview-of-multiple-audiences-for-power-bi-apps/>

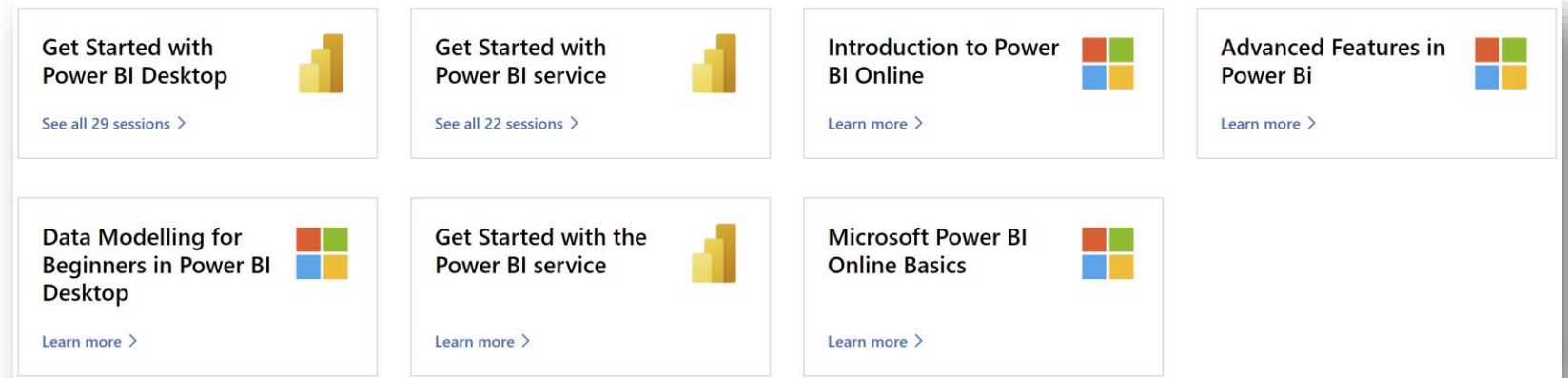
# Keep up to date with Power BI features:



- <https://community.powerbi.com/t5/Data-Stories-Gallery/Power-BI-Release-Plan/m-p/930557>
- <https://aka.ms/PowerPlatformReleasePlan>

# Free virtual Power BI training workshops

- Attend free 60-min workshops dedicated for Power BI
- All virtual
- Different topics
- Register [here](https://powerbi.microsoft.com/en-us/blog/explore-free-virtual-workshops-to-help-you-get-started-with-power-bi/)



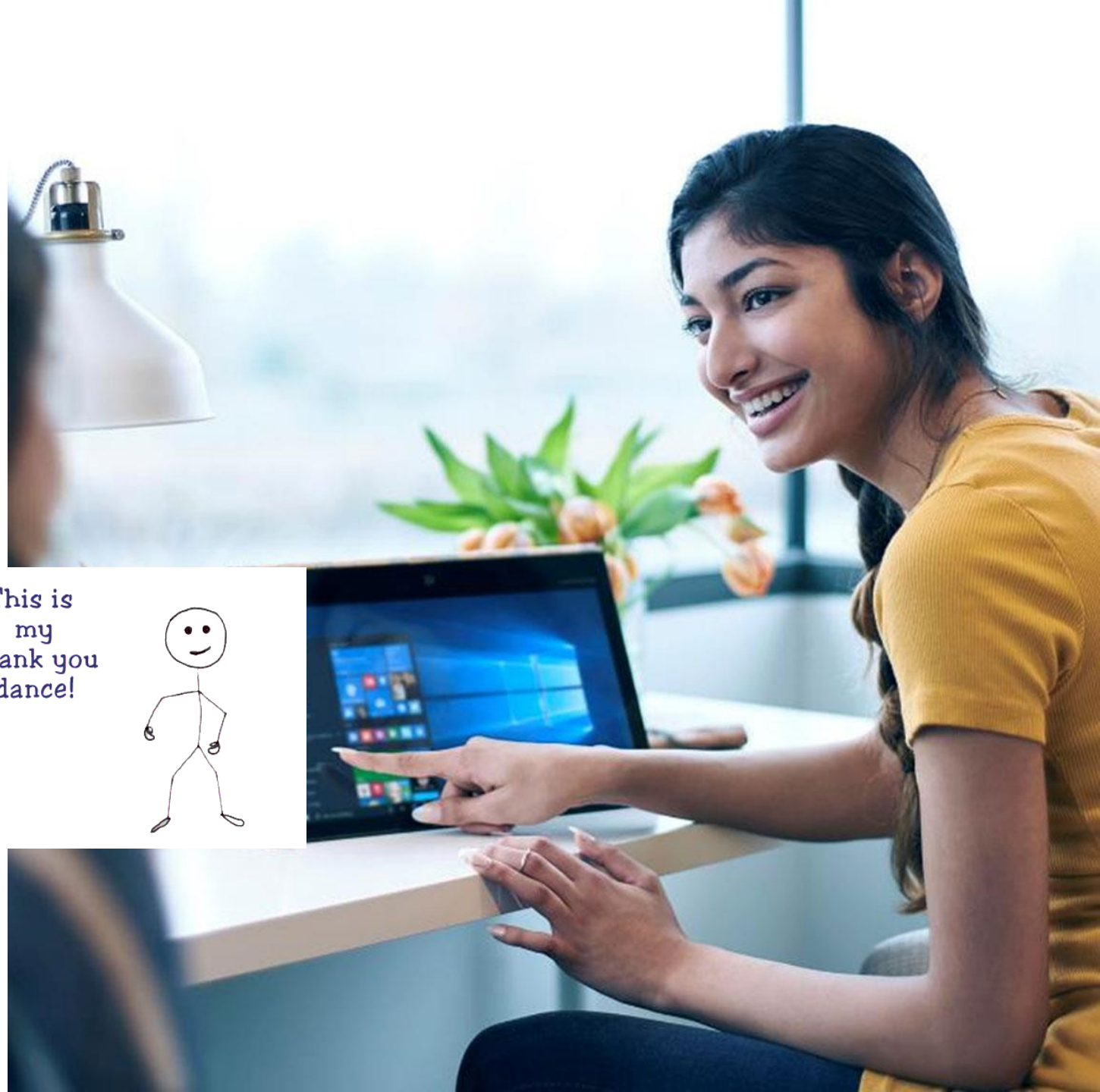
<https://powerbi.microsoft.com/en-us/blog/explore-free-virtual-workshops-to-help-you-get-started-with-power-bi/>

# Thank you !



<https://aka.ms/PBIGuy>  
<https://aka.ms/PBIGuyBlog>

This is  
my  
thank you  
dance!





It's easy to get started...

# PowerBI.com





