



What's new Frontend [A2]

Referent: Kristof Gramm

Zürich, 11. September 2018



Lumira Discovery



Lumira Discovery

- ▶ Customers of SAP Lumira, **discovery edition** that are live or planning to go live can continue to do so knowing that SAP is committed to their success. We are updating the 2018 roadmap so that the next SAP Lumira releases 2.2 and 2.3 focus on quality, performance, and some key customer driven functional improvements compared to SAP Lumira 1.31. For 2019 and beyond, we will continue to support and maintain SAP Lumira, discovery edition 2.x for the duration of the SAP BusinessObjects BI 4.2 platform supported lifetime. Mainstream support now ends December 31, 2022, and Priority 1 support now ends December 31, 2024
- ▶ SAP Lumira, **designer edition** remains our primary solution for application design with continued innovation and investment.
- ▶ Alternativen zu Lumira Discovery:
 - ▶ Webintelligence
 - ▶ Analytics Cloud
 - ▶ Lumira Designer

Lumira Designer 2.2



Lumira Designer 2.2

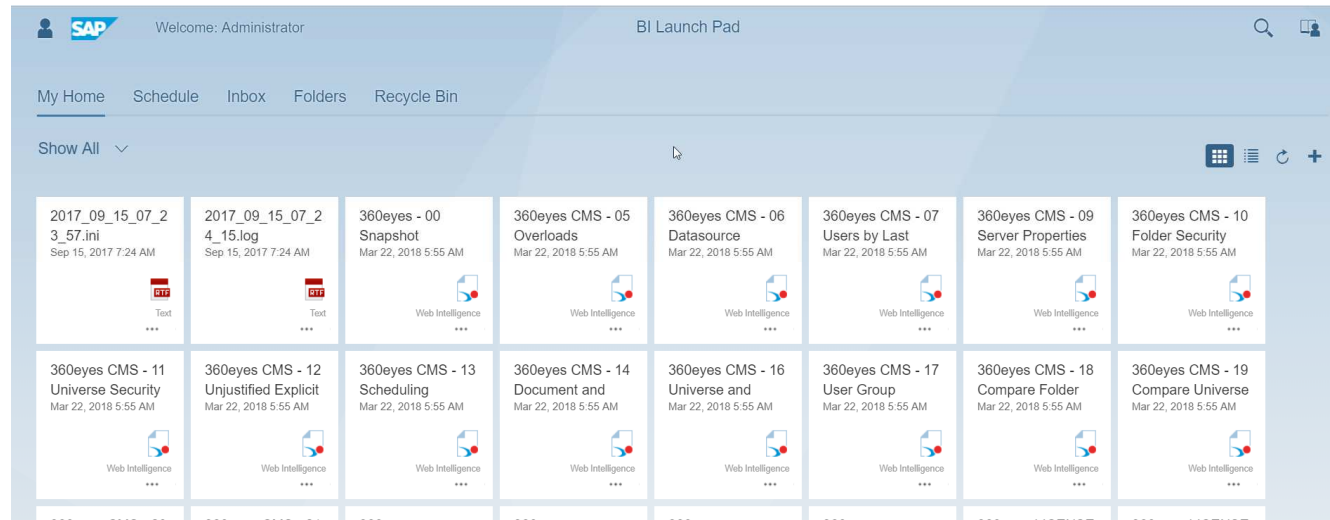
- Authoring (Online Composition)
- Document Component
- New Grouped List Component
- Chart Reference Line
- Variants (Query & Document)

The new fiorified BI Launchpad



New Fiorified Launchpad

- Modern look & feel
- SAP UI5 based
- Touch and mobile device ready
- No more right-click
- No BI Workspaces
- Old flavour still supported
- Access-URL:
 - Yourserver:port/BOE/BILaunchpad



New fiorified Launchpad DEMO



New functionality in Webi



New functions we will cover

- References
- Freehand SQL
- Groups
- Managing breaks (value based und custom breaks)
- Custom hierarchy
- TimeBetween Function / DateBetween
- Charts interactivity
- Shared Elements

References

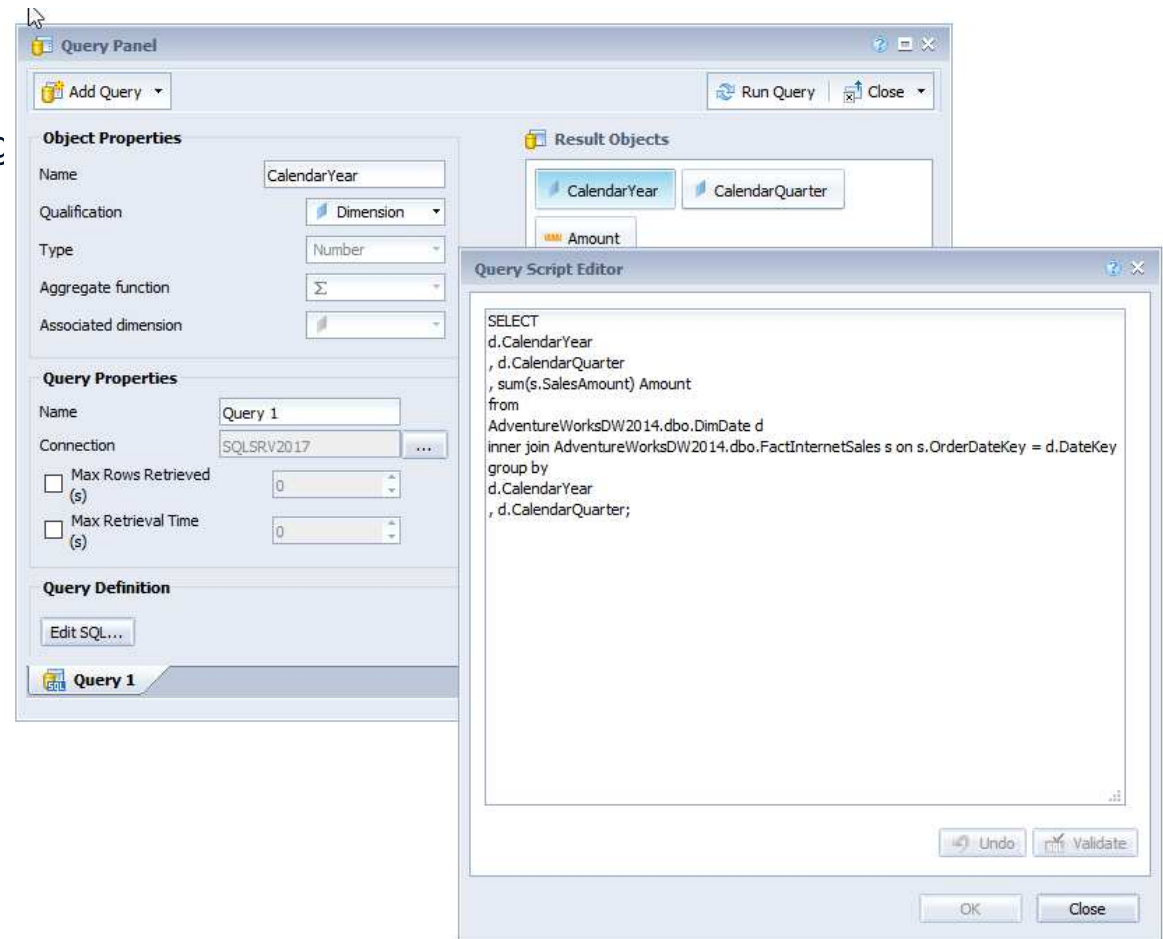
- References can be used to reference the value of one cell.
- When the data gets updated the reference also shows the changed value.
- This can be used i.e to create dynamic messages in reports

The image shows a sequence of steps in a report editor:

- A report table with values: \$1,66, \$56, \$42, \$1,21, \$8,09. A context menu is open over the \$42 cell, with 'Assign Reference...' selected.
- The 'Assign Reference' dialog box is shown. The 'Create a new reference for this cell' option is selected. The 'Name' field contains 'MyReference'.
- The 'Formula Editor' dialog box is shown. The formula field contains: `= "The value for the actual period is " + [MyReference]`. The 'Available Objects' pane shows 'Sales revenue', 'Variables', and 'Date1'. The 'Available Functions' pane shows 'Aggregate'.

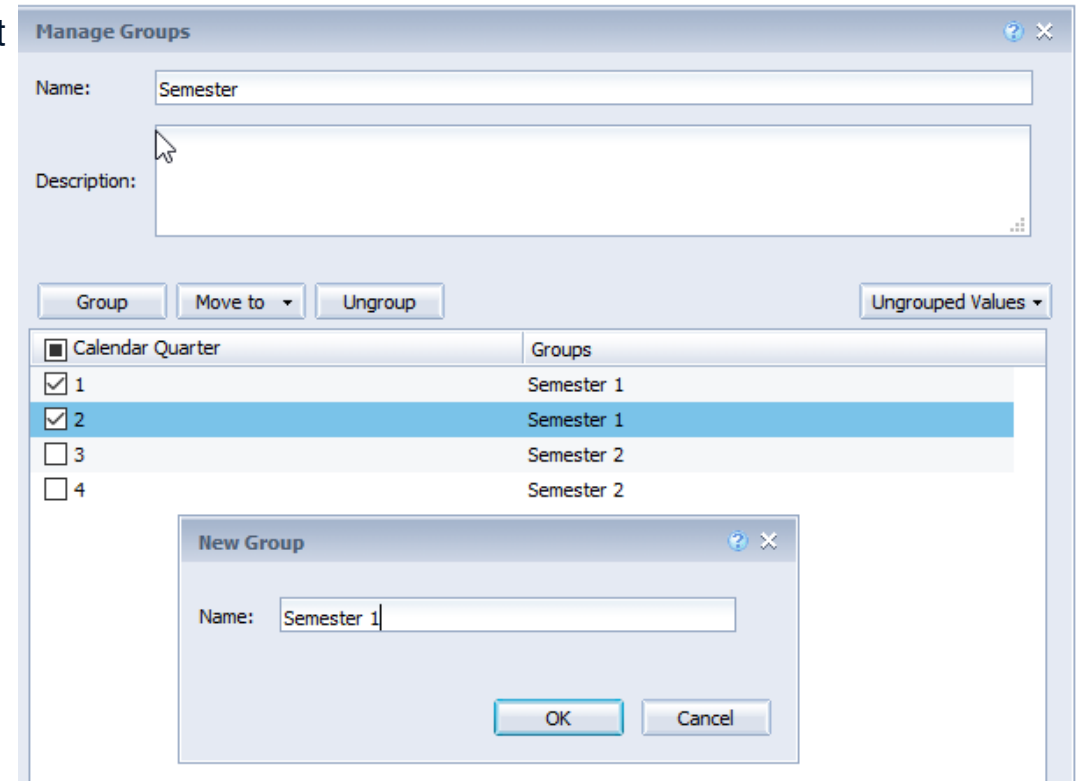
Freehand SQL

- Users can create Freehand SQL
- Qualification and aggregate function can be changed
- Connection must be setup



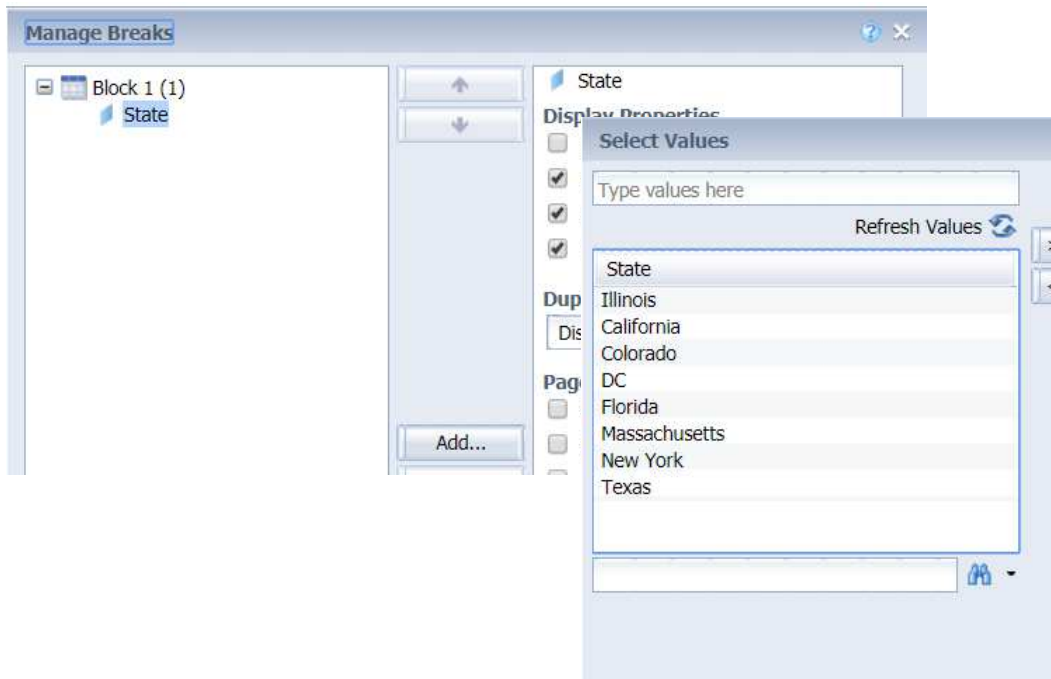
Groups

- You can combine different members to a group on report
- Much easier to maintain compared to a formula/variable
- Show other ungrouped values in a combined group



Value based breaks

- Create breaks only on some dimension values
- Can also be used to create header/footer rows

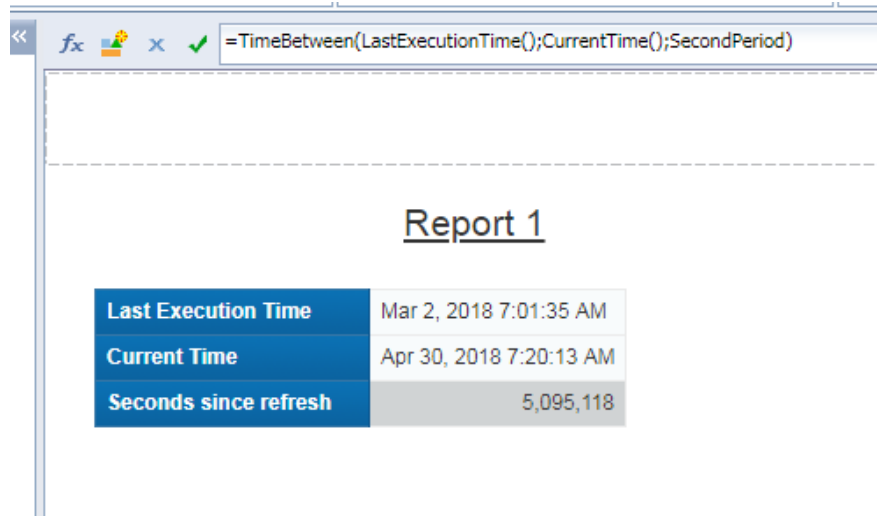


Year	State	City	Sales revenue
2014	Illinois	Chicago	\$737,914
2014	California	Los Angeles	\$982,637
2014		San Francisco	\$721,574
2014	California		\$1,704,211
2014	Colorado	Colorado Springs	\$448,302
2014	DC	Washington	\$693,211
2014	Florida	Miami	\$405,985
2014	Florida		\$405,985
2014	Massachusetts	Boston	\$238,819
2014	New York	New York	\$1,667,696
2014	Texas	Austin	\$561,123
2014		Dallas	\$427,245
2014		Houston	\$1,211,309
2014	Texas		\$2,199,677
2014			\$8,095,814

Timebetween / Datebetween

➤ Possible values for the period parameter are:

DayPeriod
WeekPeriod
MonthPeriod
QuarterPeriod
SemesterPeriod
YearPeriod
HourPeriod
MinutePeriod
SecondPeriod
MillisecondPeriod.

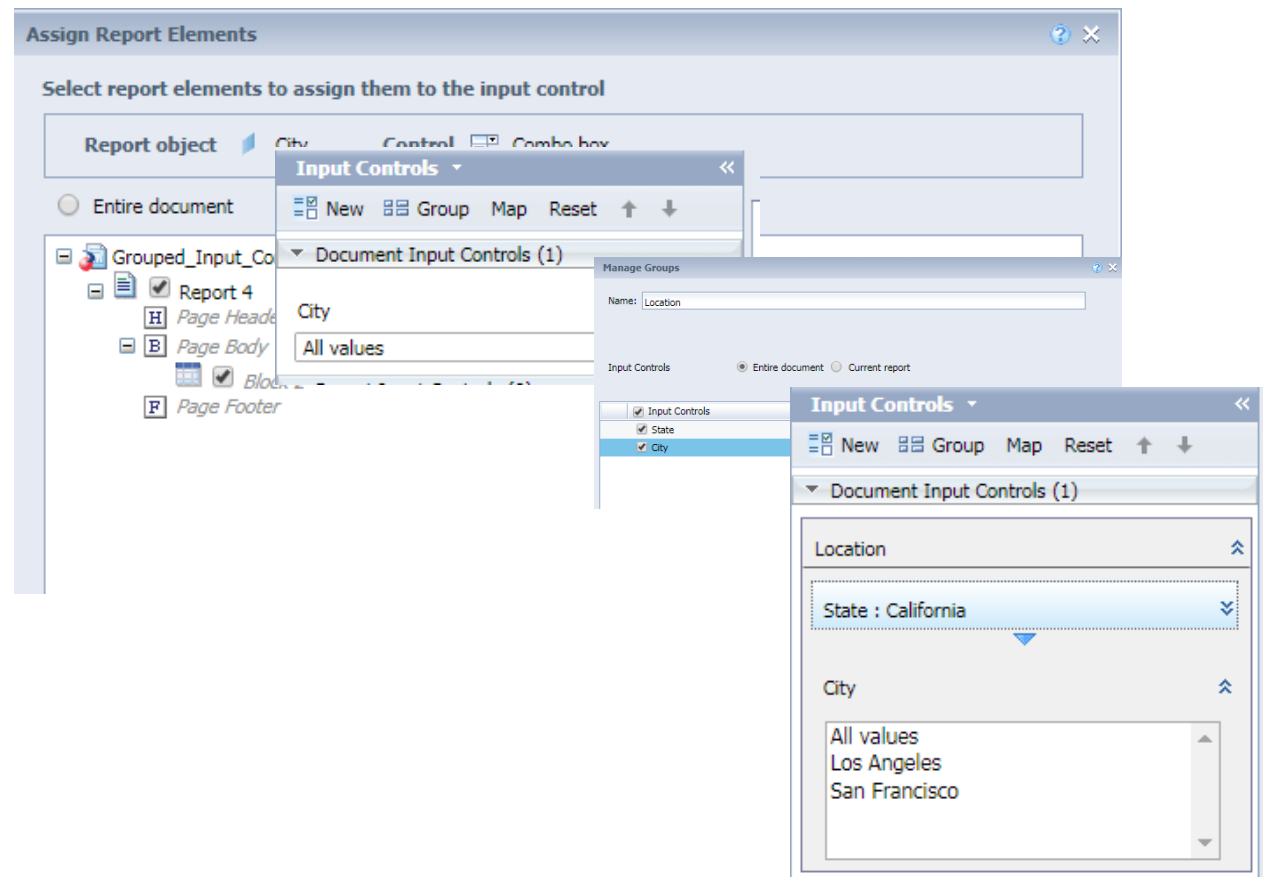


The screenshot shows a report window titled "Report 1" with a formula bar at the top containing the DAX formula: `=TimeBetween(LastExecutionTime();CurrentTime();SecondPeriod)`. Below the title is a table with three rows of data.

Report 1	
Last Execution Time	Mar 2, 2018 7:01:35 AM
Current Time	Apr 30, 2018 7:20:13 AM
Seconds since refresh	5,095,118

Global Input Controls

- Assign a Input control to the entire document
- Group Input controls to create cascading between the controls
- Need option «Allow all values» to be checked



New functionality in Webi DEMO

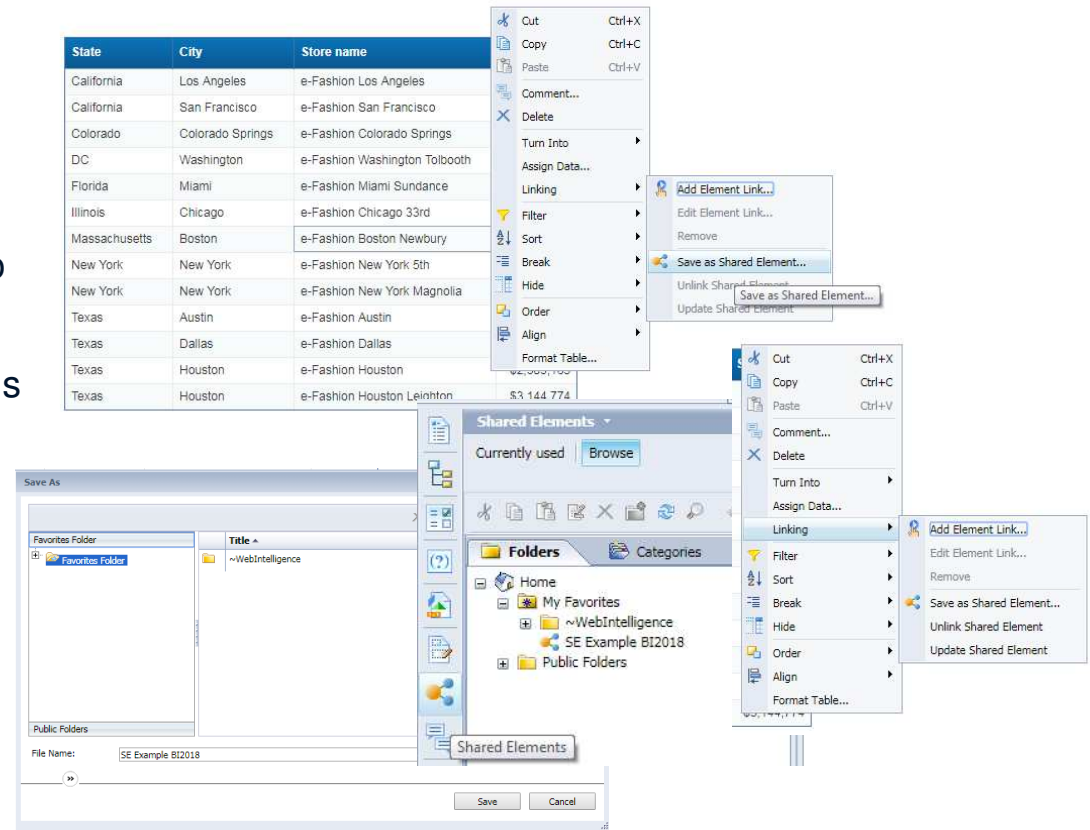


How to use shared elements



Create a shared element

- To reuse objects they need to be stored as shared element
- Launchpad folders can be used (security applies)
- If source object gets update the shared element will also be updated
- You can use shared elements to store variables/functions in the repository



Reuse report objects

- › If you reuse a report object as a shared element all content will be copied into the target report:
 - › Connection
 - › Queryfields
 - › Variables
 - › Filters
 - › Settings

How to use custom elements



Custom elements

- › New feature to extend visualisation capabilities of WebIntelligence
- › Third-Party vendors like Galigeo, C-Maps, Graphomate provide visualizations to enhance your report
- › List of vendors can be found at sapappcenter.com
- › Need to deploy .war-file and set Service-URL in Webi-Application properties

How to use custom elements DEMO



Create composite reports and scorecards



Composite report

- › Use references to show important data in tiles on first page
- › Use shared elements to display report parts from different sources
- › Use auto update function to always get the latest changes
- › Use report linking to create links to more detailed reports

Scorecard

- › Webi supports Unicode-characters like ↓↑⇅ and also stuff like 😊 😞
- › Examples from <https://apps.timwhitlock.info/emoji/tables/unicode>
- › You can use conditional formatting and/or number formatting to place the characters dynamically in the columns

New custom format

Positive	Negative	Equal to zero	Undefined
0.00'↑'	0.00'↓'		

Sample

1234.57↑;1234.57↓

Add... Cancel

Scorecard

- › Webi supports HTML in cells
- › You can create bullecharts or barveyballs within a table-cell
- › Concatenate the dynamic values with the HTML code

Scorecard / Composite report DEMO



Wir freuen uns auf angeregte Gespräche mit Ihnen ...

- › Kristof Gramm, Senior Consultant / Partner
kgramm@it-logix.ch



